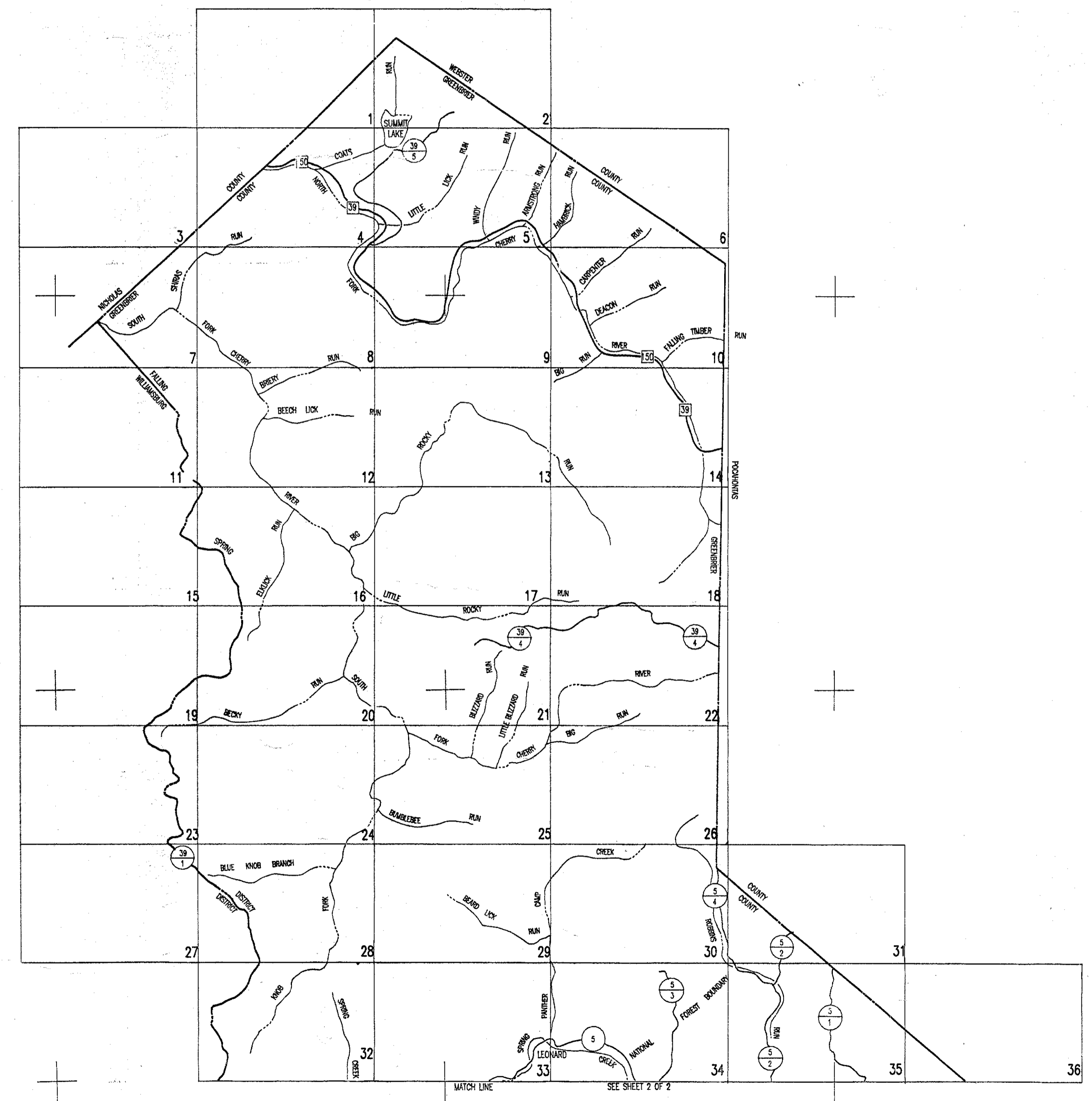


497,600
2,112,000

497,600
2,270,400

392,000
2,112,000

392,000
2,270,400



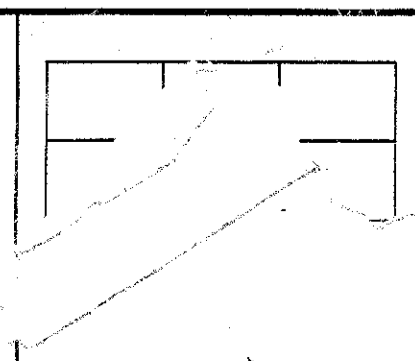
West Virginia State Tax Department
For Tax Purposes Only
Base Mapping - Prepared By
Pentree, Inc.
Oak Hill, West Virginia
Cadastral Mapping - Prepared By
Brackenhich & Associates, Inc.
Lewisburg, West Virginia

LEGEND	
Property line	Original lot line or interior tract
Roadway	Deed lot number (15)
Water	Parcel or index number (C)
Conspiration line	Improvement
District line	Railroad
County line	Scaled dimension
State line	Deed
Land hook	Calculated area

RESTRICTION

All tax maps created under the provisions of reappraisal legislation are the property of the State of West Virginia and the reproduction, copying, distribution or sale of such tax maps or any copies thereof without the written permission of the State Tax Commissioner is prohibited by law.

REVISIONS	



GREENBRIER COUNTY
OF WEST VIRGINIA

FALLING SPRING DISTRICT
INDEX MAP
Sheet 1 of 2
Scale: 1" = 5280'