

**WV LEGISLATIVE REGULATION
TITLE 189 SERIES 2009**

Disclaimer:

This tax map was compiled for purposes of taxation from available record evidence and has not been field verified. This map is not a valid survey plat and the data on this map does not imply any official status to such data. The State of West Virginia and county assessor's office assume no liability that might result from the use of this map.

Restrictions:

All finished tax maps created under the provisions of legislation are the property of the county assessors who created them and the reproduction, copying, distribution, sale, or lease of such tax maps or copies thereof without the written permission of the respective county assessors is prohibited by law.



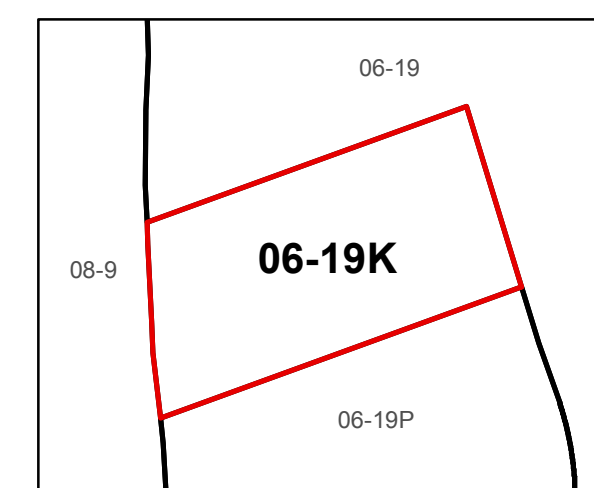
Legend

Corporation line	-----	River	-----
District line	-----	Deed lot number (25)	-----
County line	-----	Parcel or index number (999.9)	-----
State line	-----	Parcel acreage 5.23 Ac	-----
Property Line	-----		
Right of Way	-----		
Railroad	-----		
Lot line	-----		
Road Centerline	-----		

Revisions

Revised 04/01/2012 By Greenbrier County GIS Office

MAP REFERENCE



GREENBRIER COUNTY - WEST VIRGINIA

Office of Assessor

For Tax Purposes Only

Fort Spring

Map: 06-19K

Date: 3/15/2017

SCALE: 1 inch = 20 feet