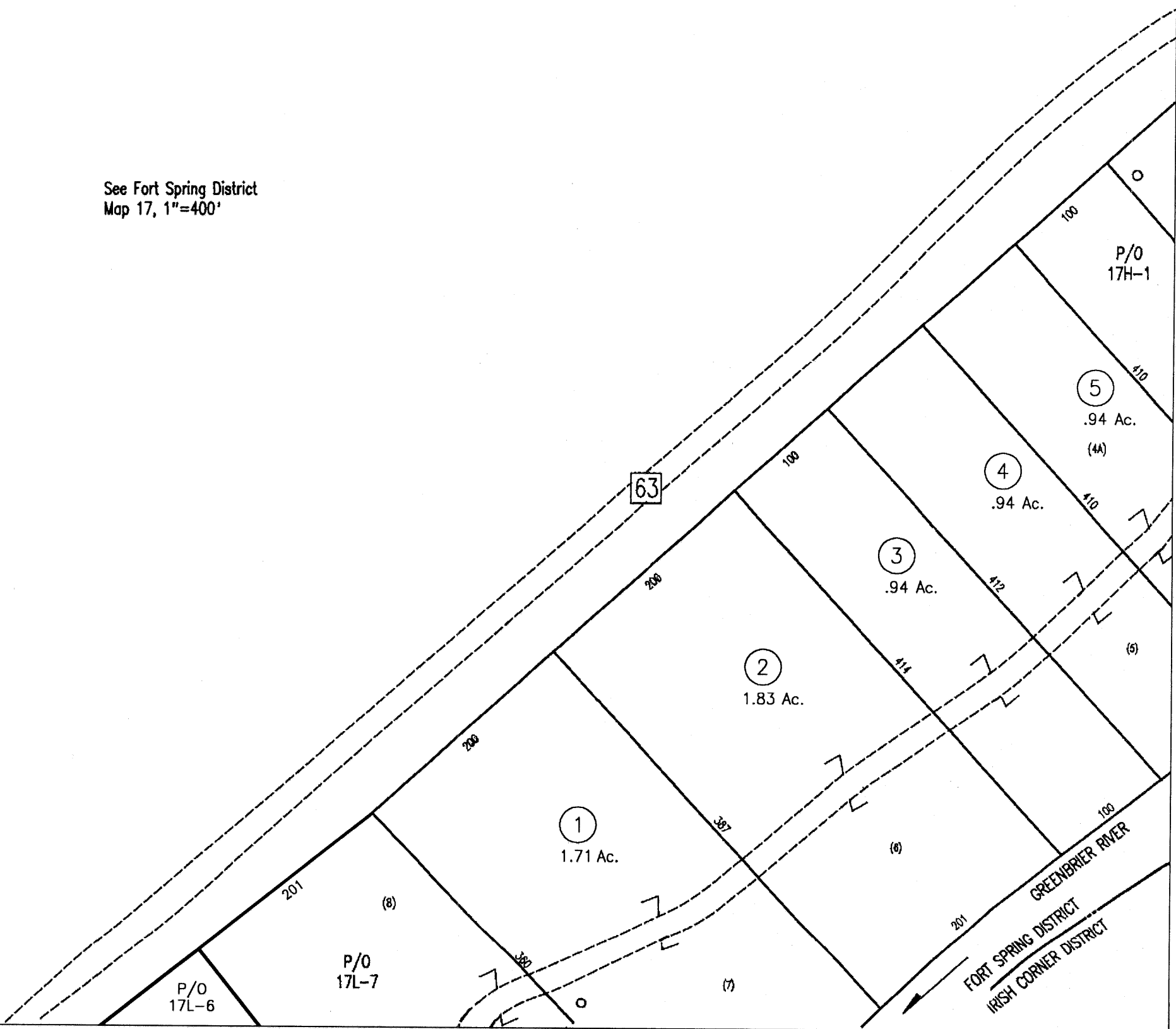


See Fort Spring District
Map 17, 1"=400'

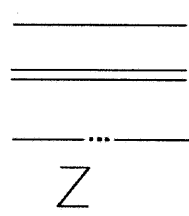


For Tax Purposes Only

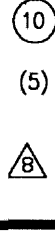
Greenbrier County
Assessor's Office

Legend

Property line
Roads
Streams
Land hook



Parcel number
Lot number
Consolidated
Parcel number
Property line



Restrictions

All tax maps created under the provisions of
reappraisal legislation are the property of the State
of West Virginia and the reproduction, copying,
distribution or sale of such tax maps or any copies
thereof without the written permission of the State
Tax Commissioner is prohibited by law.

plotted Nov 2005

		18A
17G	17H	
17L		

Greenbrier County
State of West Virginia
Lewisburg, West Virginia

Fort Spring
District
17G

scale: 1 inch = 100 feet