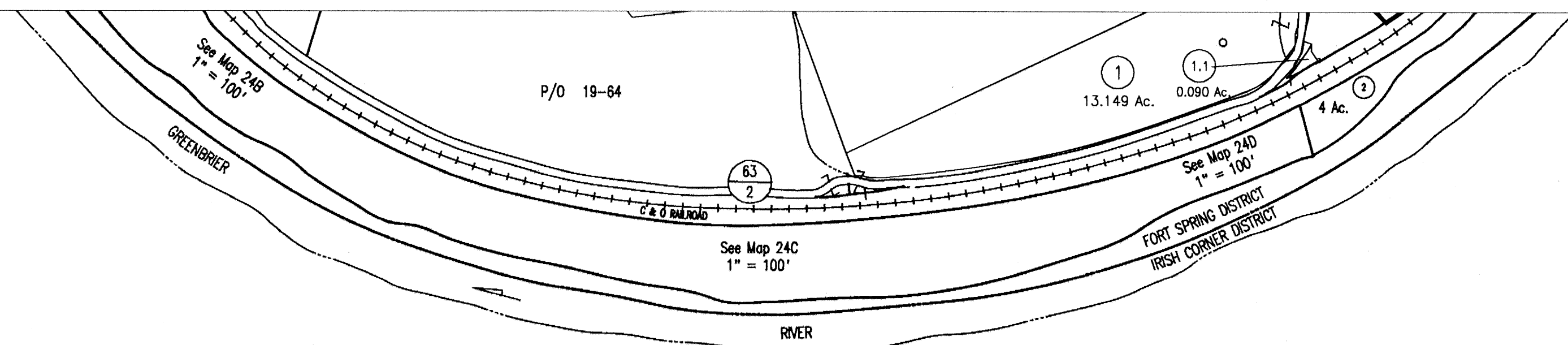


FORT SPRING DISTRICT
IRISH CORNER DISTRICT
GREENBRIER RIVER

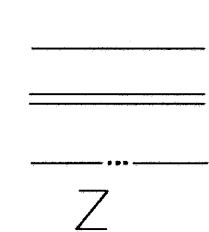


For Tax Purposes Only

Greenbrier County
Assessor's Office

Legend

Property line
Roads
Streams
Land hook



Parcel number
Lot number
Consolidated
Parcel number
Property line

(10)

(5)

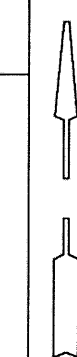
(A)



Restrictions

All tax maps created under the provisions of reappraisal legislation are the property of the State of West Virginia and the reproduction, copying, distribution or sale of such tax maps or any copies thereof without the written permission of the State Tax Commissioner is prohibited by law.

plotted Nov 2005



18	19	20
23	24	

Greenbrier County
State of West Virginia
Lewisburg, West Virginia

Fort Spring
District
24

scale: 1 inch = 400 feet