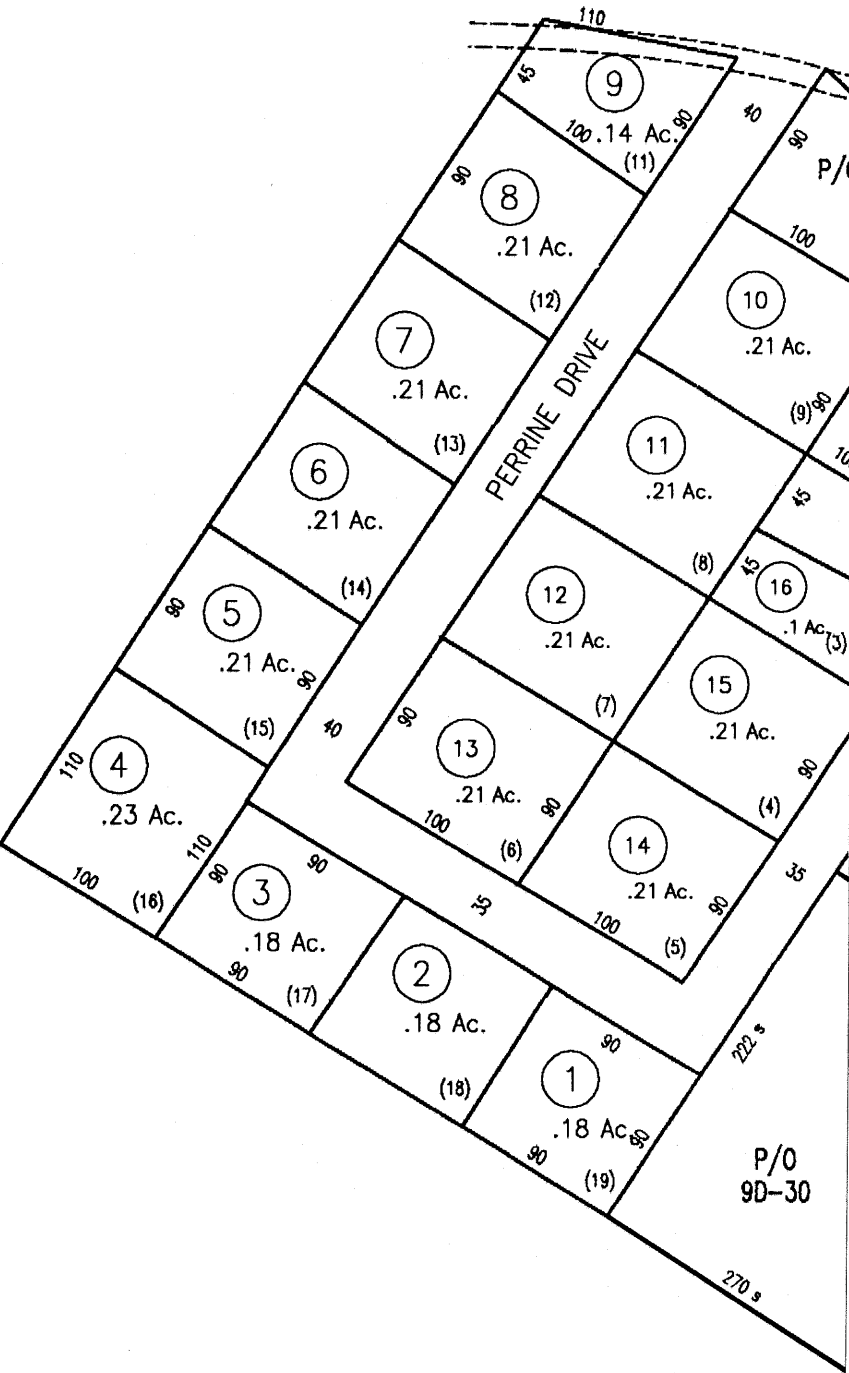


See Fort Spring District
Map 9, 1" = 400'



For Tax Purposes Only		Legend		Restrictions		plotted Nov 2005		Greenbrier County State of West Virginia Lewisburg, West Virginia		Fort Spring District 9C scale: 1 inch = 100 feet	
Greenbrier County Assessor's Office		Property line Roads Streams Land hook	<div><div></div><div></div><div></div><div>Z</div></div>	Parcel number Lot number Consolidated Parcel number Property line	<div><div>10</div><div>5</div><div></div><div></div><div></div></div>	All tax maps created under the provisions of reappraisal legislation are the property of the State of West Virginia and the reproduction, copying, distribution or sale of such tax maps or any copies thereof without the written permission of the State Tax Commissioner is prohibited by law.		<div><div>6K</div><div>6R</div><div>6S</div><div>9C</div><div>9D</div><div>9K</div><div>9G</div><div>9H</div></div>			