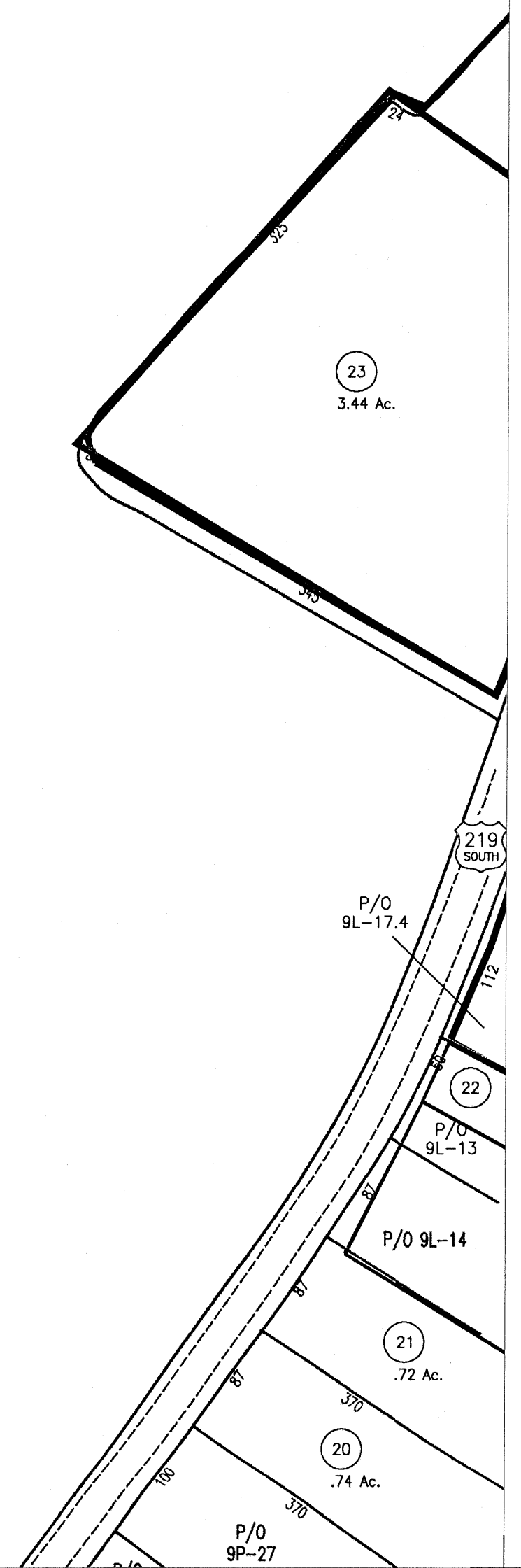
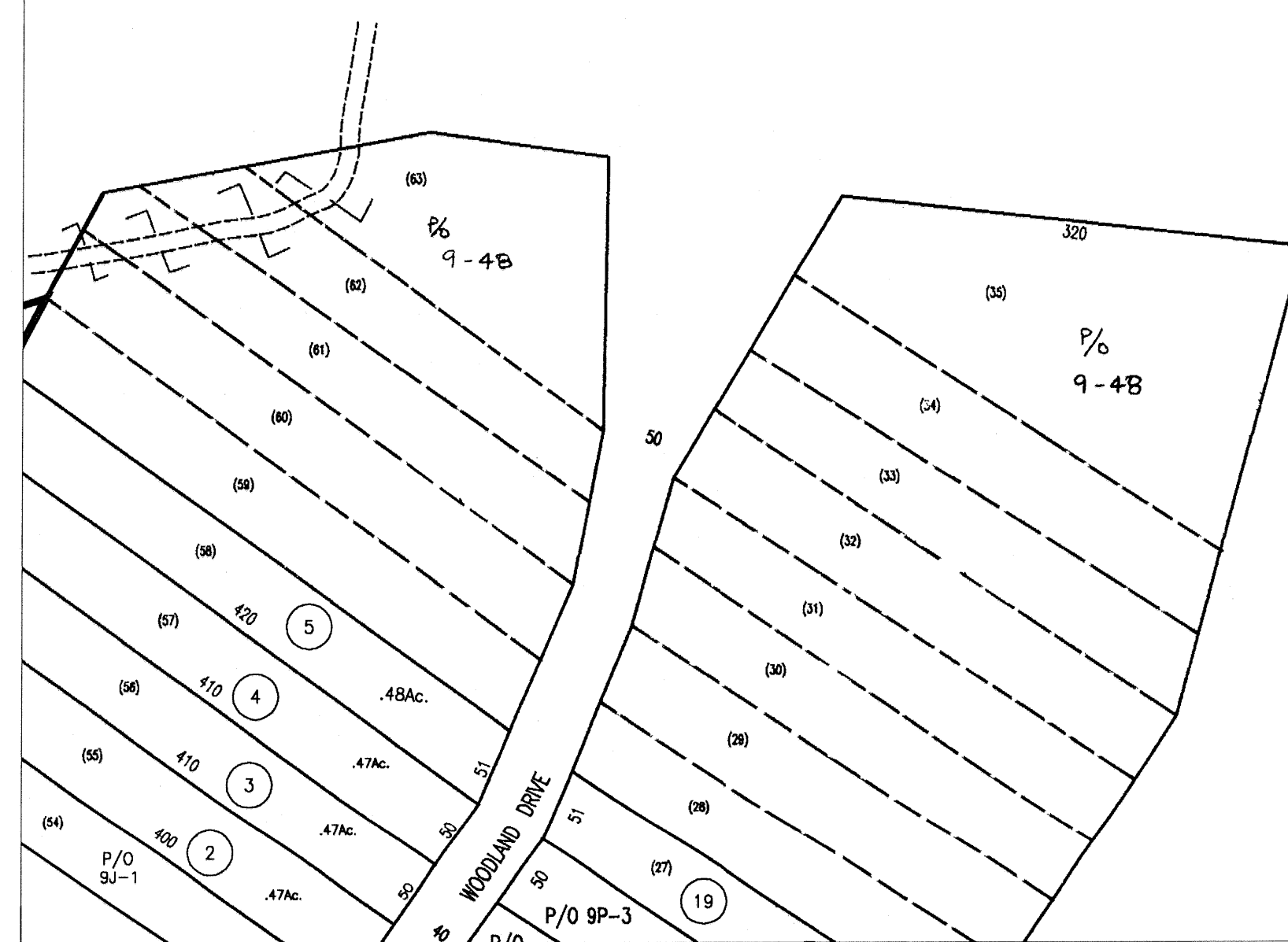


SEE FORT SPRING DISTRICT  
MAP 9, 1"=400'




For Tax Purposes Only

Greenbrier County  
Assessor's Office

### Legend

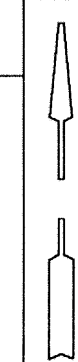
- Property line
- Roads
- Streams
- Land hook

Parcel number	(10)
Lot number	(5)
Consolidated	
Parcel number	(8)
Property line	

Restrictions

All tax maps created under the provisions of reappraisal legislation are the property of the State of West Virginia and the reproduction, copying, distribution or sale of such tax maps or any copies thereof without the written permission of the State Tax Commissioner is prohibited by law.

plotted Nov 2005



	9C	9G
9J	9K	9L
9N	9P	9R

Greenbrier County  
State of West Virginia  
Lewisburg, West Virginia

Fort Spring  
District  
9K  
scale: 1 inch = 100 feet