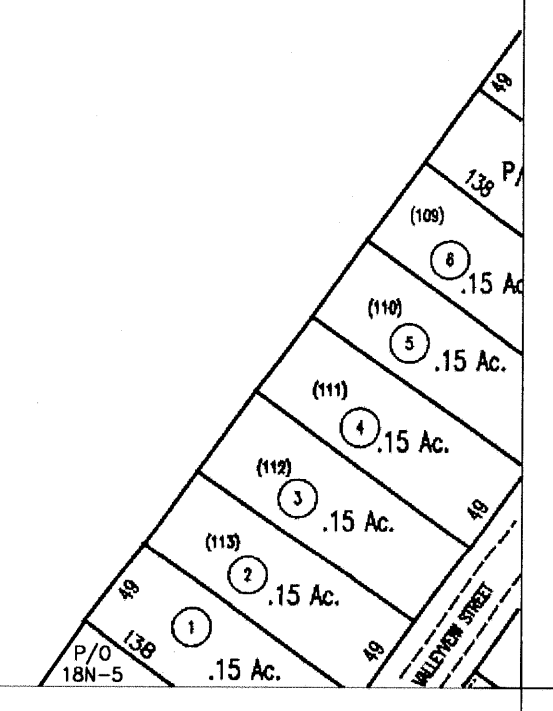


See Lewisburg District
Map 18, 1"=400'



For Tax Purposes Only

Greenbrier County
Assessor's Office

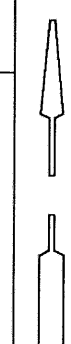
Legend

| | | | |
|---------------|-------|---------------|-----|
| Property line | ===== | Parcel number | ⑩ |
| Roads | ===== | Lot number | (5) |
| Streams | ----- | Consolidated | △ |
| Land hook | Z | Parcel number | |
| | | Property line | — |

Restrictions

All tax maps created under the provisions of reappraisal legislation are the property of the State of West Virginia and the reproduction, copying, distribution or sale of such tax maps or any copies thereof without the written permission of the State Tax Commissioner is prohibited by law.

plotted Nov 2005



| | | |
|-----|-----|-----|
| | | 13R |
| 18J | 18K | |
| 18N | 18P | |

Greenbrier County
State of West Virginia
Lewisburg, West Virginia

Lewisburg
District
18J
scale: 1 inch = 100 feet