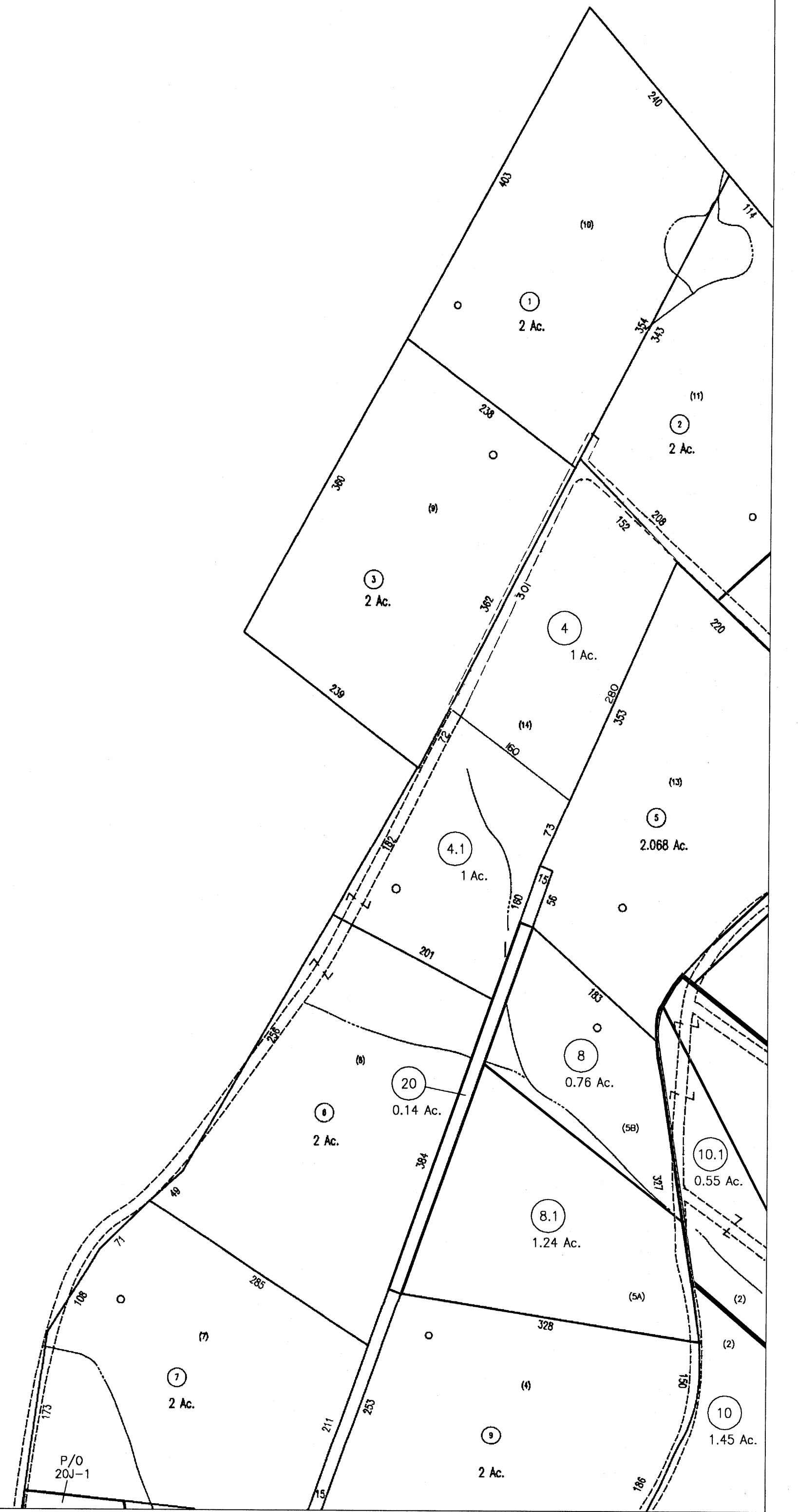




See Lewisburg District
Map 20, 1" = 400'



<p>For Tax Purposes Only</p> <p>Greenbrier County Assessor's Office</p>	<p>Legend</p> <p>Property line ———</p> <p>Roads = = = =</p> <p>Streams - - - -</p> <p>Land hook Z</p>		<p>Parcel number ⑩</p> <p>Lot number (5)</p> <p>Consolidated </p> <p>Parcel number </p> <p>Property line </p>	<p>Restrictions</p> <p>All tax maps created under the provisions of reappraisal legislation are the property of the State of West Virginia and the reproduction, copying, distribution or sale of such tax maps or any copies thereof without the written permission of the State Tax Commissioner is prohibited by law.</p>	<p>plotted Nov 2005</p>	<p>19D 20A 20B</p> <p>19H 20E 20F</p> <p>19M 20J 20K</p>	<p>Greenbrier County State of West Virginia Lewisburg, West Virginia</p>	<p>Lewisburg District 20E</p> <p>scale: 1 inch = 100 feet</p>