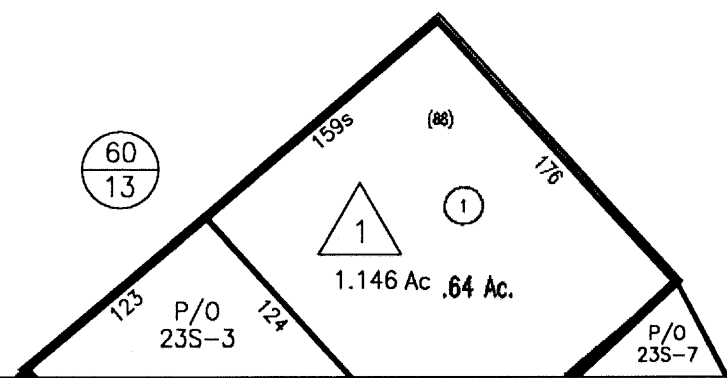


See Lewisburg District
Map 23, 1"=400'



For Tax Purposes Only	Legend			Restrictions		 	<table border="1"><tr><td>23G</td><td>18R</td><td>19M</td></tr><tr><td>23F</td><td>23M</td><td>24J</td></tr><tr><td></td><td>23S</td><td>24N</td></tr></table>	23G	18R	19M	23F	23M	24J		23S	24N	Greenbrier County State of West Virginia Lewisburg, West Virginia	Lewisburg District 23M scale: 1 inch = 100 feet
23G	18R	19M																
23F	23M	24J																
	23S	24N																
Greenbrier County Assessor's Office	Property line Roads Streams Land hook	<div><div>_____</div><div>=====</div><div>-----</div><div>Z</div></div> <div>Parcel number Lot number Consolidated Parcel number Property line</div> <div><div>⑩</div><div>(5)</div><div>A</div><div><div></div><div></div></div></div> <td><p>All tax maps created under the provisions of reappraisal legislation are the property of the State of West Virginia and the reproduction, copying, distribution or sale of such tax maps or any copies thereof without the written permission of the State Tax Commissioner is prohibited by law.</p><p>plotted Nov 2005</p></td>	<p>All tax maps created under the provisions of reappraisal legislation are the property of the State of West Virginia and the reproduction, copying, distribution or sale of such tax maps or any copies thereof without the written permission of the State Tax Commissioner is prohibited by law.</p> <p>plotted Nov 2005</p>															