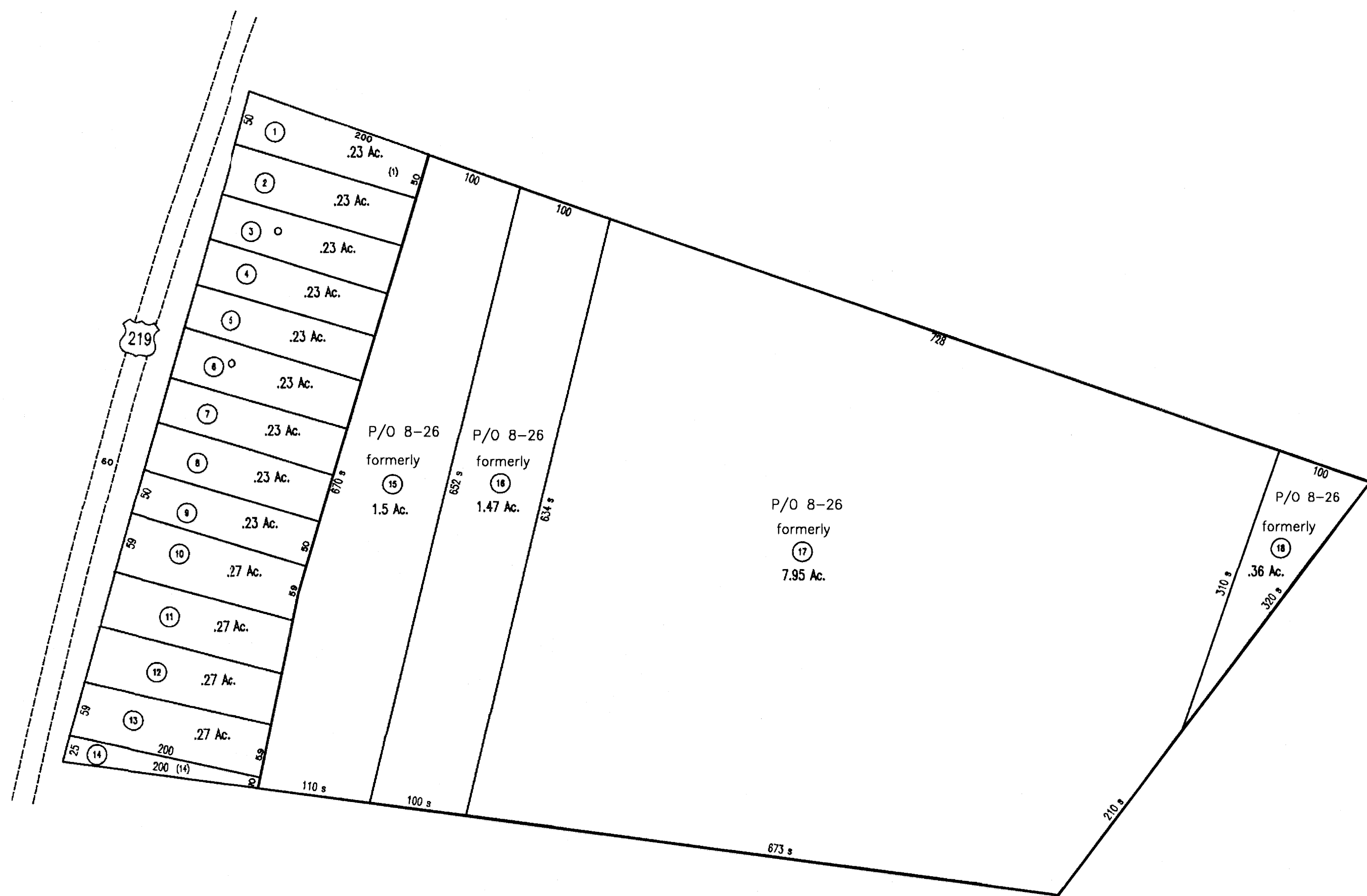








See Lewisburg District
Map 8, 1" = 400'



See Lewisburg District
Map 8, 1" = 400'

For Tax Purposes Only Greenbrier County Assessor's Office	Legend		Restrictions All tax maps created under the provisions of reappraisal legislation are the property of the State of West Virginia and the reproduction, copying, distribution or sale of such tax maps or any copies thereof without the written permission of the State Tax Commissioner is prohibited by law.	plotted Nov 2005	 	<table><tr><td>8M</td><td></td></tr><tr><td>8S</td><td>9R</td></tr><tr><td>13G</td><td>13L 14F</td></tr></table>	8M		8S	9R	13G	13L 14F	Greenbrier County State of West Virginia Lewisburg, West Virginia	Lewisburg District 8S scale: 1 inch = 100 feet
	8M													
8S	9R													
13G	13L 14F													
Property line Roads Streams Land hook	    Z	Parcel number (10) Lot number (5) Consolidated Parcel number Property line												