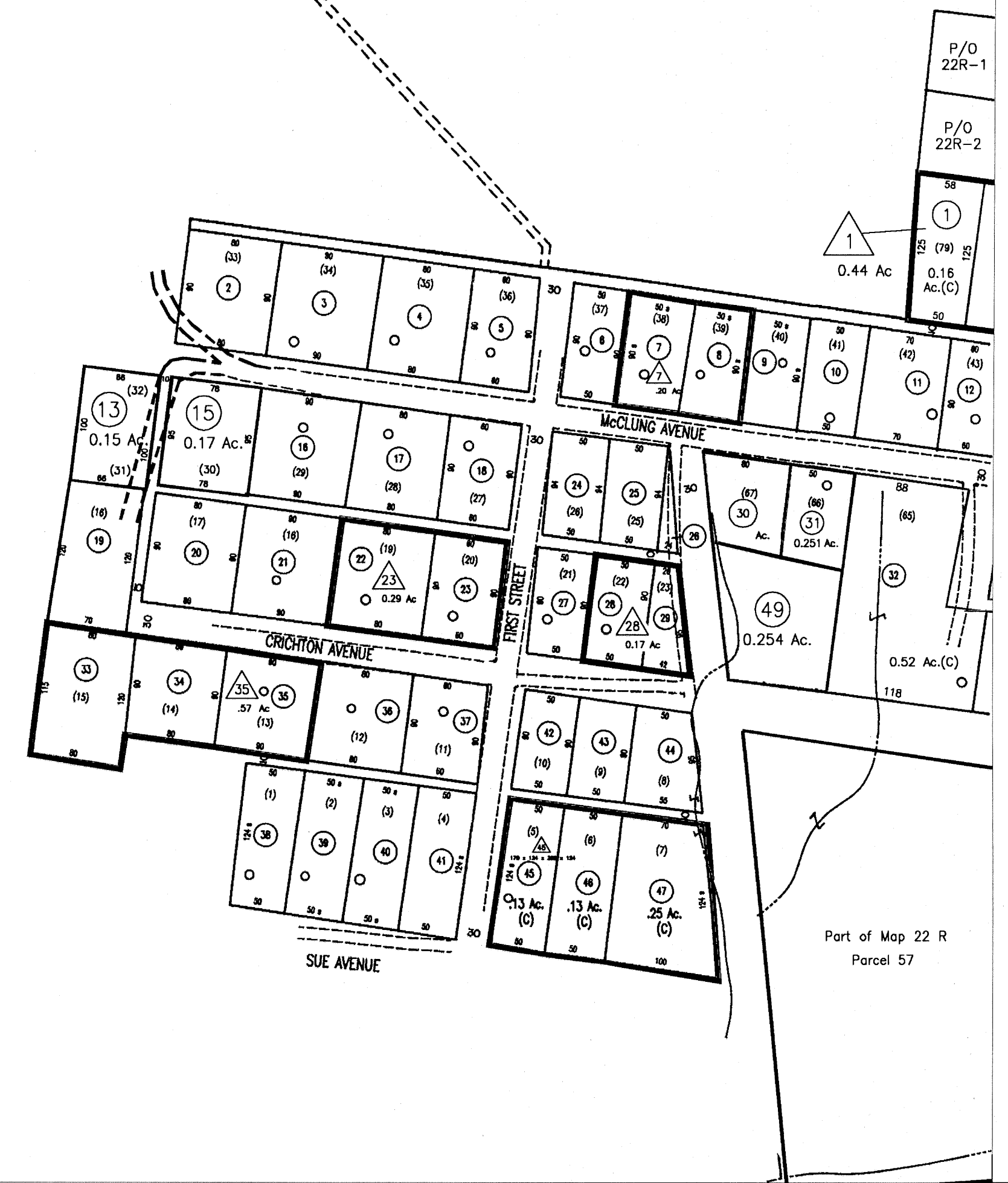


EXEMPT
48
23 Ac
GREENBRIER PUBLIC SERVICE DIST. 2

See Meadow Bluff District Map 21
1" = 400'



For Tax Purposes Only

Greenbrier County
Assessor's Office

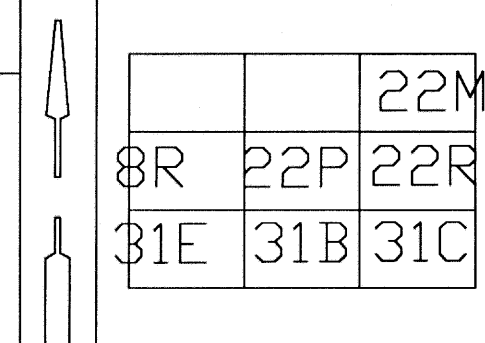
Legend

Property line	———	Parcel number	⑩
Roads	====	Lot number	(5)
Streams	~~~~~	Consolidated	△
Land hook	Z	Parcel number	⑩
		Property line	———

Restrictions

All tax maps created under the provisions of reappraisal legislation are the property of the State of West Virginia and the reproduction, copying, distribution or sale of such tax maps or any copies thereof without the written permission of the State Tax Commissioner is prohibited by law.

plotted Nov 2005



Greenbrier County
State of West Virginia
Lewisburg, West Virginia

Meadow Bluff
District
22P
scale: 1 inch = 100 feet