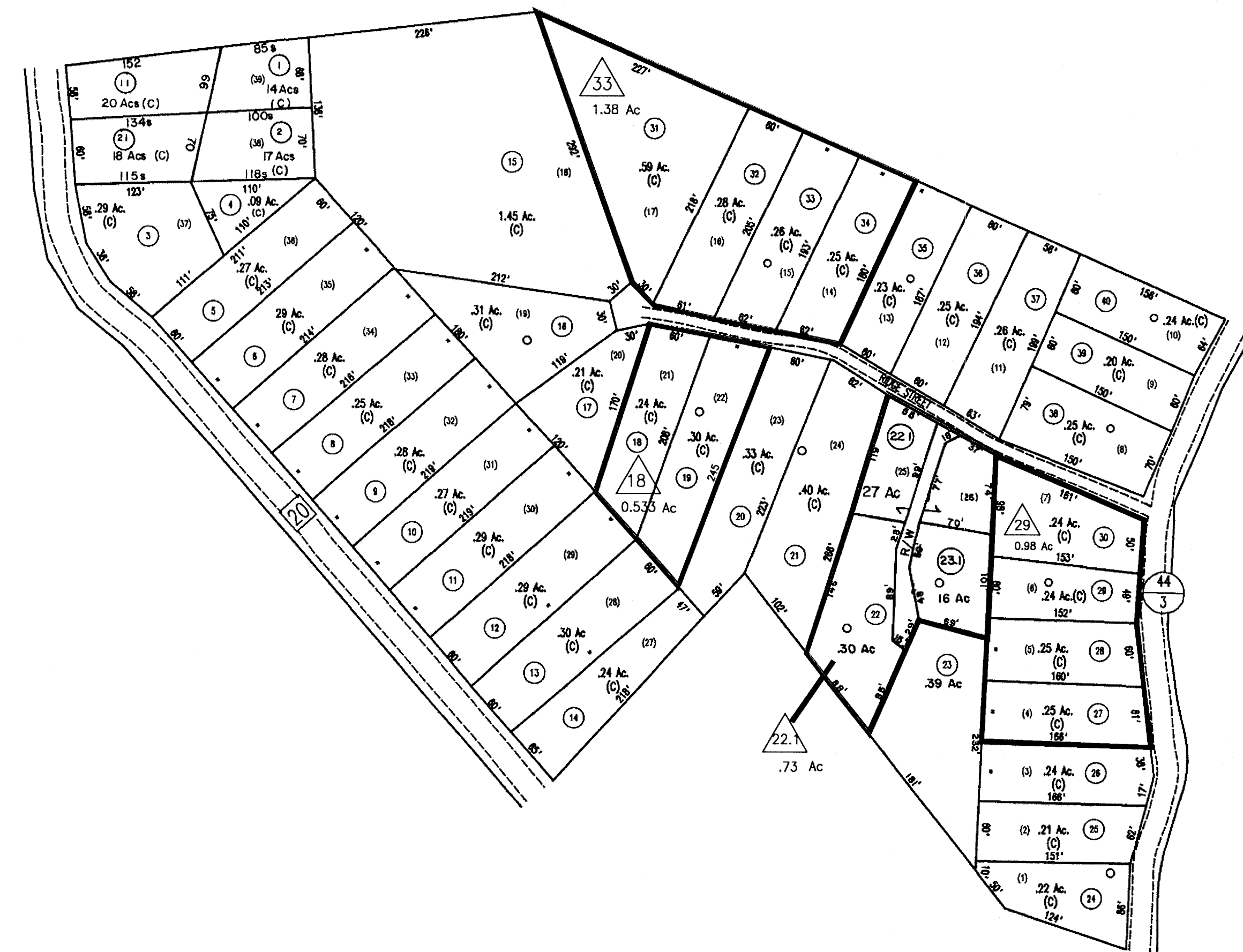


See Meadow Bluff District
Sheet 31, 1" = 400'



For Tax Purposes Only

Greenbrier County
Assessor's Office

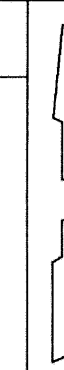
Legend

Property line	=====	Parcel number	⑩
Roads	=====	Lot number	(5)
Streams	~~~~~	Consolidated	△
Land hook	Z	Parcel number	△
		Property line	=====

Restrictions

All tax maps created under the provisions of reappraisal legislation are the property of the State of West Virginia and the reproduction, copying, distribution or sale of such tax maps or any copies thereof without the written permission of the State Tax Commissioner is prohibited by law.

plotted Nov 2005



8R	31J	31K
	31N	42F
	40A	40B

Greenbrier County
State of West Virginia
Lewisburg, West Virginia

Meadow Bluff
District
31N
scale: 1 inch = 100 feet