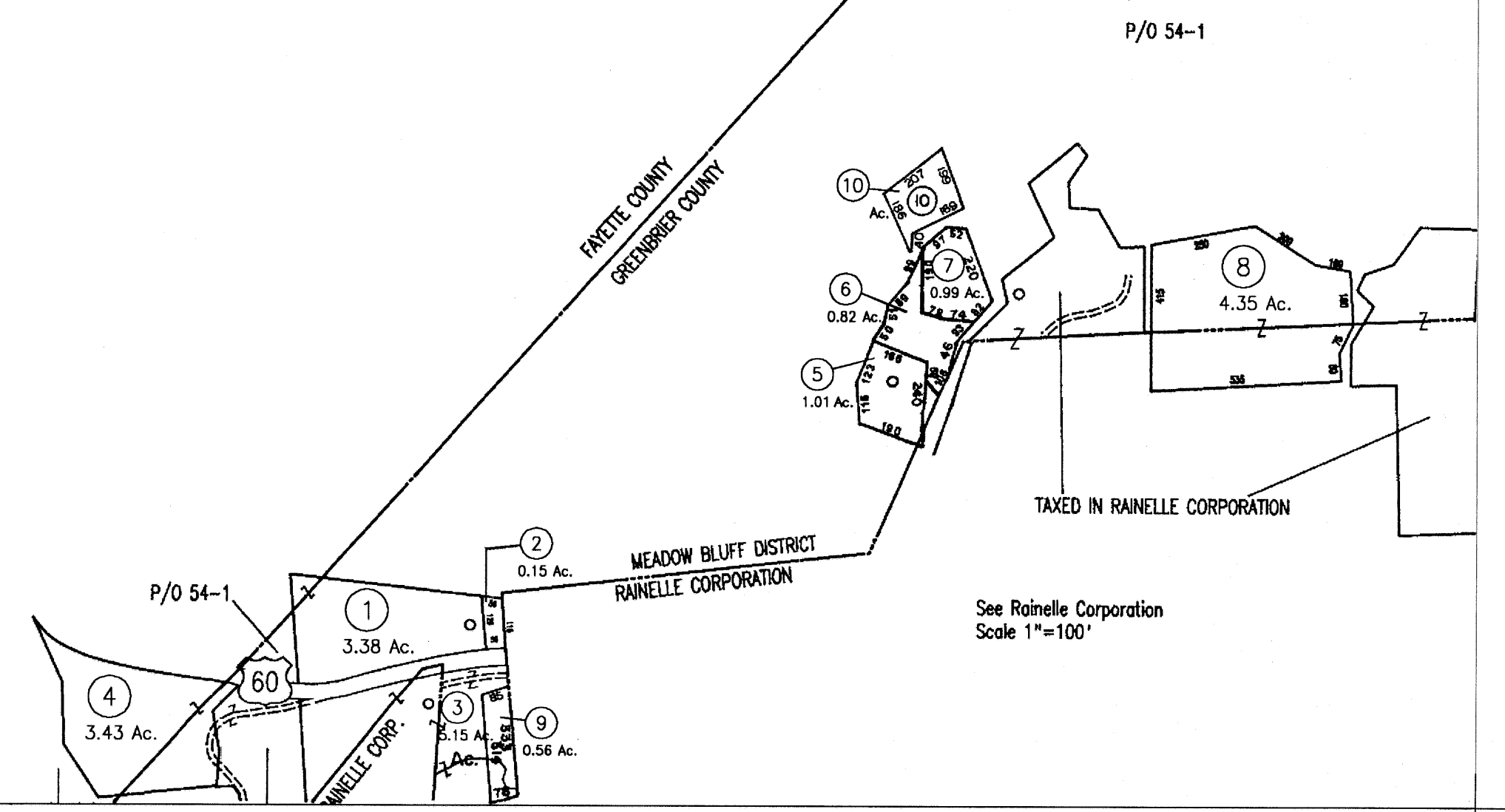


MEADOW RIVER  
 P/O 38-9  
 GREENBRIER COUNTY  
 FAYETTE COUNTY



For Tax Purposes Only  
 Greenbrier County  
 Assessor's Office

Legend	
Property line	=====
Roads	=====
Streams	~~~~~
Land hook	Z
Parcel number	⑩
Lot number	(5)
Consolidated	△
Parcel number	△
Property line	—

Restrictions  
 All tax maps created under the provisions of reappraisal legislation are the property of the State of West Virginia and the reproduction, copying, distribution or sale of such tax maps or any copies thereof without the written permission of the State Tax Commissioner is prohibited by law.

plotted Nov 2005

37	46	47
	53	54
	60	61

Greenbrier County  
 State of West Virginia  
 Lewisburg, West Virginia

Meadow Bluff District  
 53  
 scale: 1 inch = 400 feet