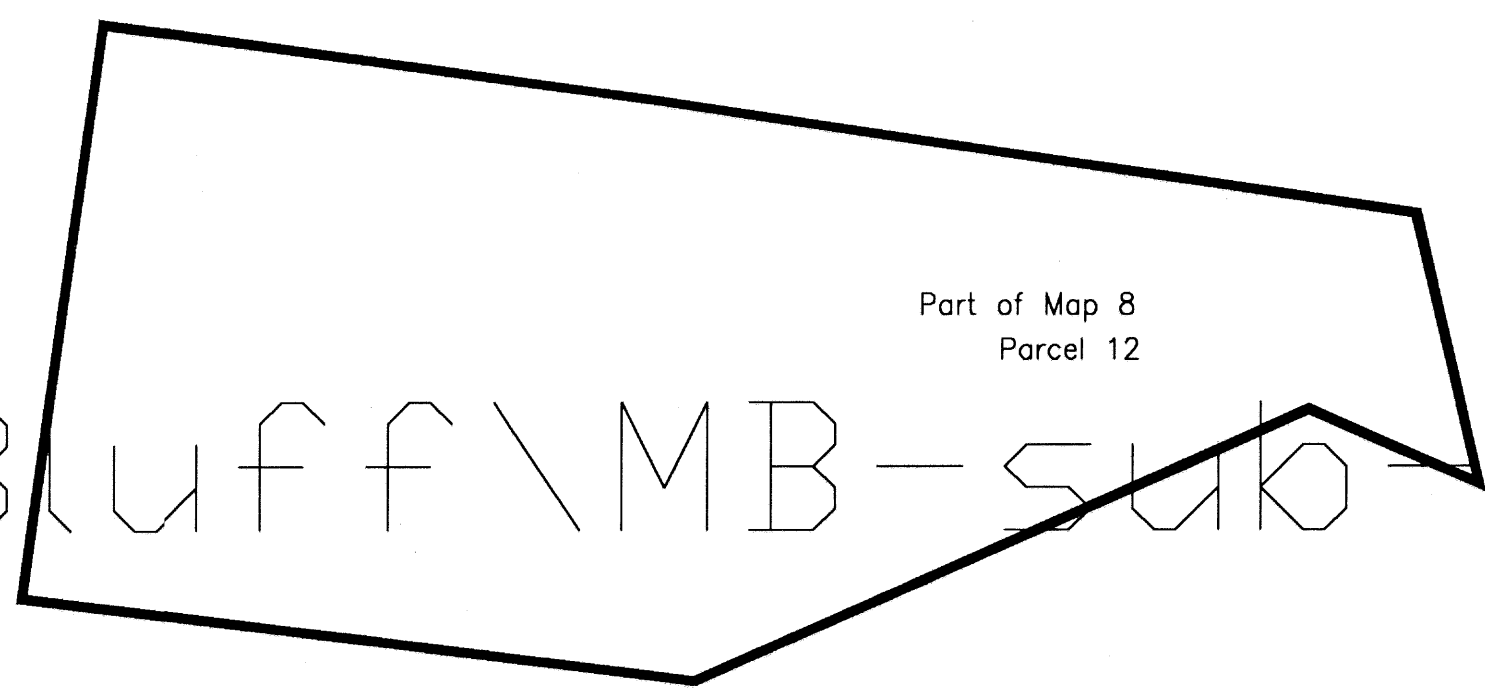
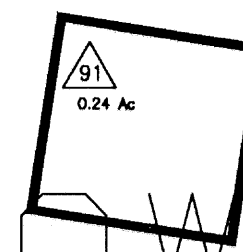
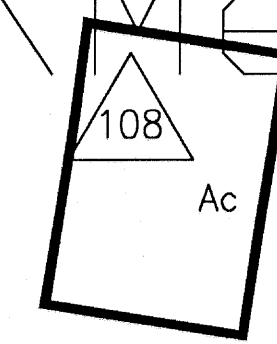


see Map 8 (Parcels 13,16,18,21,23)

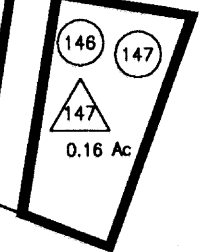
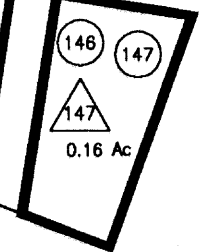
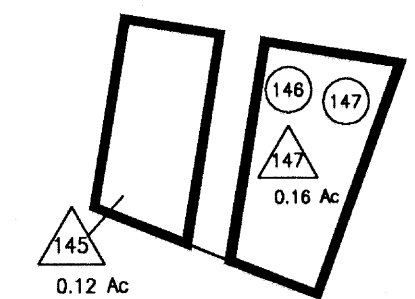
see Map 8

M: \Meadow Bluff

\MB-sub-cal-files\11-Map8R.cal



Part of Map 8
Parcel 12



For Tax Purposes Only

Greenbrier County
Assessor's Office

Legend

Property line	=====	Parcel number	⑩
Roads	=====	Lot number	(5)
Streams	~~~~~	Consolidated	△
Land hook	Z	Parcel number	
		Property line	—

Restrictions

All tax maps created under the provisions of reappraisal legislation are the property of the State of West Virginia and the reproduction, copying, distribution or sale of such tax maps or any copies thereof without the written permission of the State Tax Commissioner is prohibited by law.

plotted Nov 2005

8P	8R	31E
	60D	47C

Greenbrier County
State of West Virginia
Lewisburg, West Virginia

Meadow Bluff
District

8R

scale: 1 inch = 100 feet