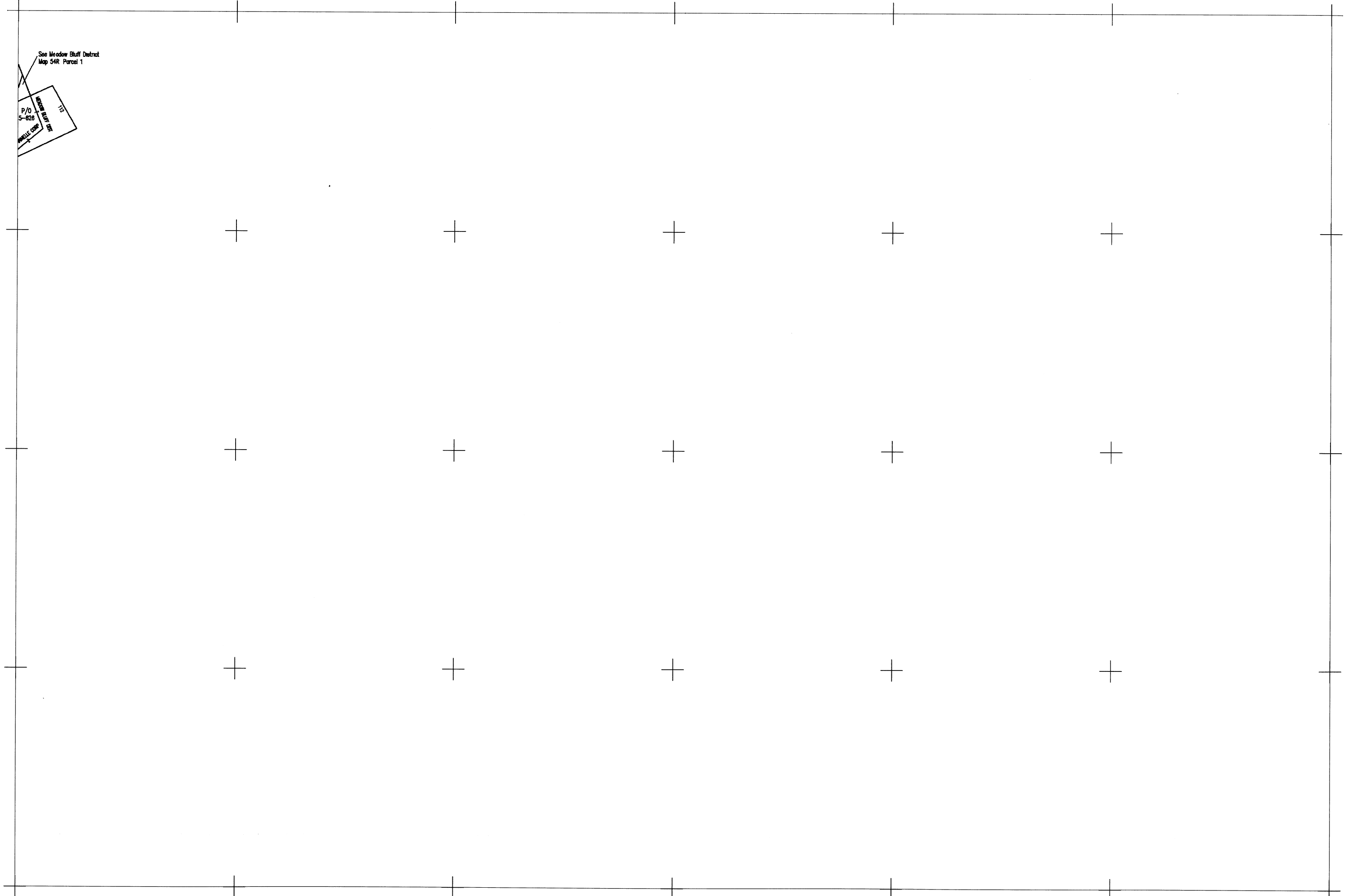


See Meadow Bluff District
Map 54R Parcel 1

P/O
5-828
MAY 1989
117



For Tax Purposes Only
Greenbrier County
Assessor's Office

Legend	
Property line	====
Roads	=====
Streams	~~~~~
Land hook	Z
Parcel number	⑩
Lot number	(5)
Consolidated	△
Parcel number	△
Property line	———

Restrictions
All tax maps created under the provisions of reappraisal legislation are the property of the State of West Virginia and the reproduction, copying, distribution or sale of such tax maps or any copies thereof without the written permission of the State Tax Commissioner is prohibited by law.

Plotted May 2009

1		
5	6	
10		

Greenbrier County
State of West Virginia
Lewisburg, West Virginia

Rainelle
Corporation
6
scale: 1 inch = 100 feet