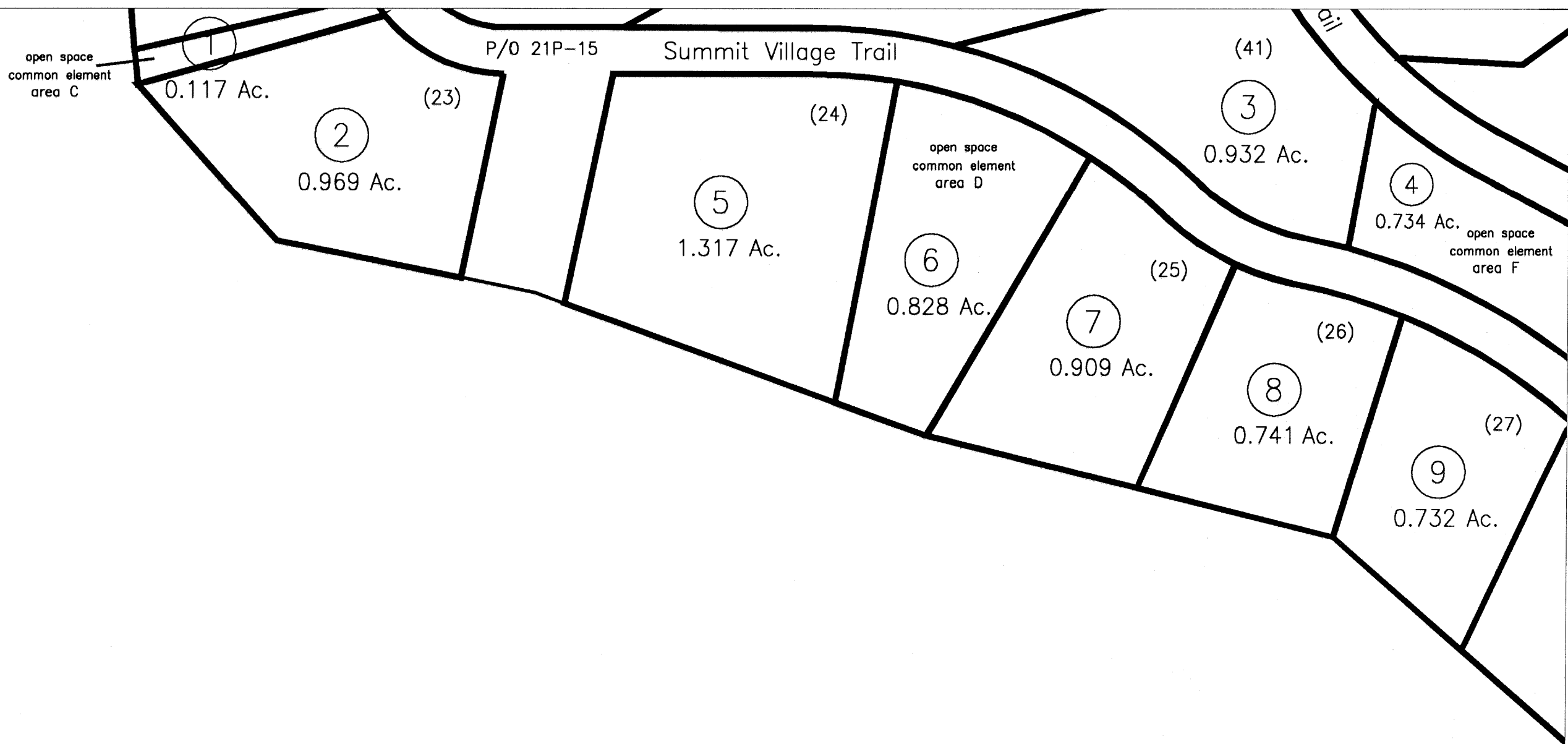
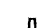



Greenbrier Summit Village



For Tax Purposes Only  Greenbrier County Assessor's Office	Legend			Restrictions		 	<table border="1"><tr><td></td><td>21N</td><td>21P</td></tr><tr><td>25G</td><td>26A</td><td>26B</td></tr><tr><td>25-</td><td>26K</td><td>26L</td></tr></table>		21N	21P	25G	26A	26B	25-	26K	26L	Greenbrier County State of West Virginia Lewisburg, West Virginia	White Sulphur District 26A  scale: 1 inch = 100 feet
		21N	21P															
25G	26A	26B																
25-	26K	26L																
Property line Roads Streams Land hook	<div><div>_____</div><div>=====</div><div>-----</div><div>Z</div></div> <div>Parcel number Lot number Consolidated Parcel number Property line</div> <div><div><div>10</div></div><div><div>5</div></div><div><div><div>▲</div></div></div><div><div><div><div></div></div></div><div><div><div></div></div></div></div></div> <td><div>All tax maps created under the provisions of reappraisal legislation are the property of the State of West Virginia and the reproduction, copying, distribution or sale of such tax maps or any copies thereof without the written permission of the State Tax Commissioner is prohibited by law.</div><div>plotted Nov 2005</div></td>	<div>All tax maps created under the provisions of reappraisal legislation are the property of the State of West Virginia and the reproduction, copying, distribution or sale of such tax maps or any copies thereof without the written permission of the State Tax Commissioner is prohibited by law.</div> <div>plotted Nov 2005</div>																