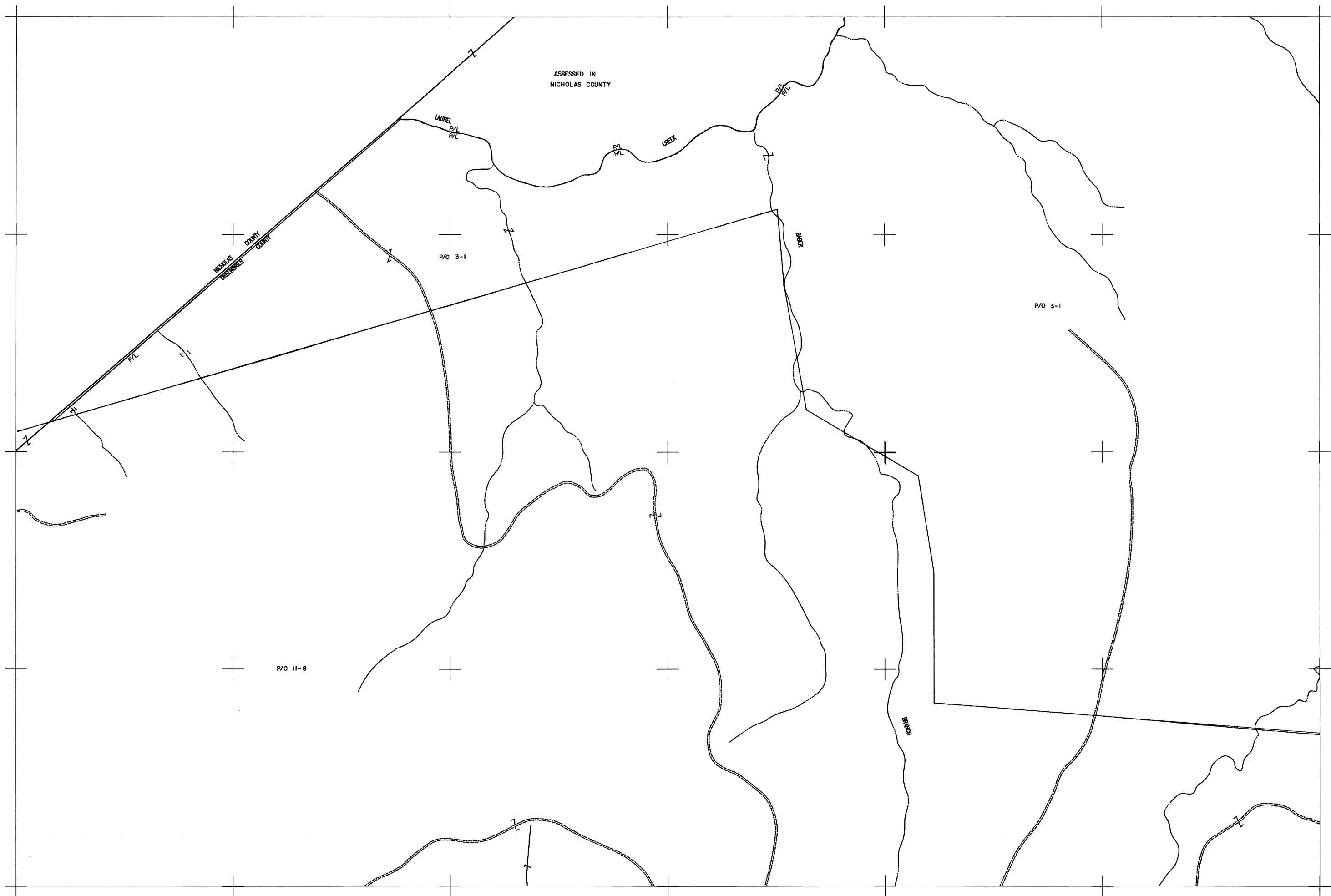



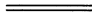
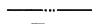
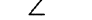
ASSESSED IN  
NICHOLAS COUNTY


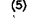




For Tax Purposes Only

Greenbrier County  
Assessor's Office

Legend

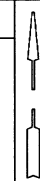
- Property line 
- Roads 
- Streams 
- Land hook 

- Parcel number 
- Lot number 
- Consolidated Parcel number 
- Property line 

Restrictions

All tax maps created under the provisions of reappraisal legislation are the property of the State of West Virginia and the reproduction, copying, distribution or sale of such tax maps or any copies thereof without the written permission of the State Tax Commissioner is prohibited by law.

Plotted June 2009



	2	3
5	6	7
10	11	12

Greenbrier County  
State of West Virginia  
Lewisburg, West Virginia

Williamsburg  
District  
6  
scale: 1 inch = 400 feet