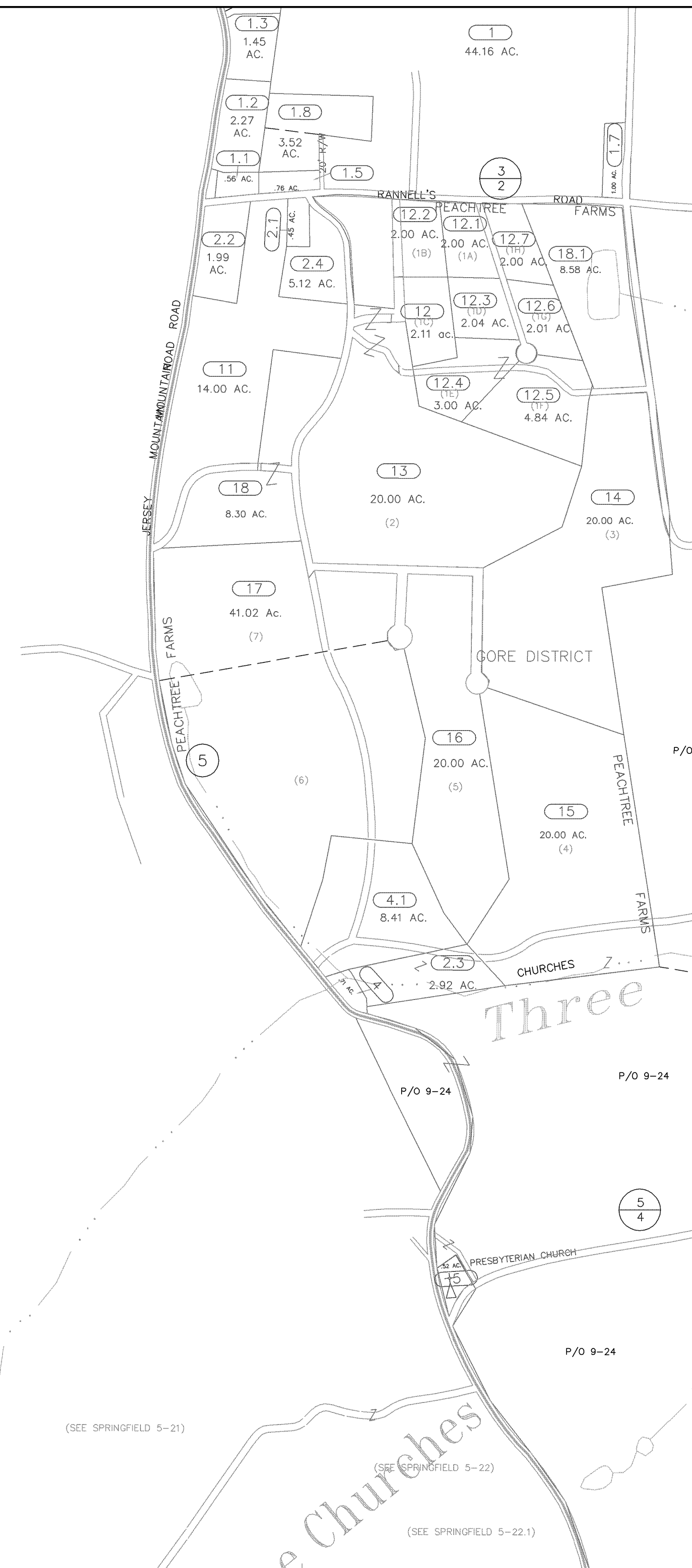
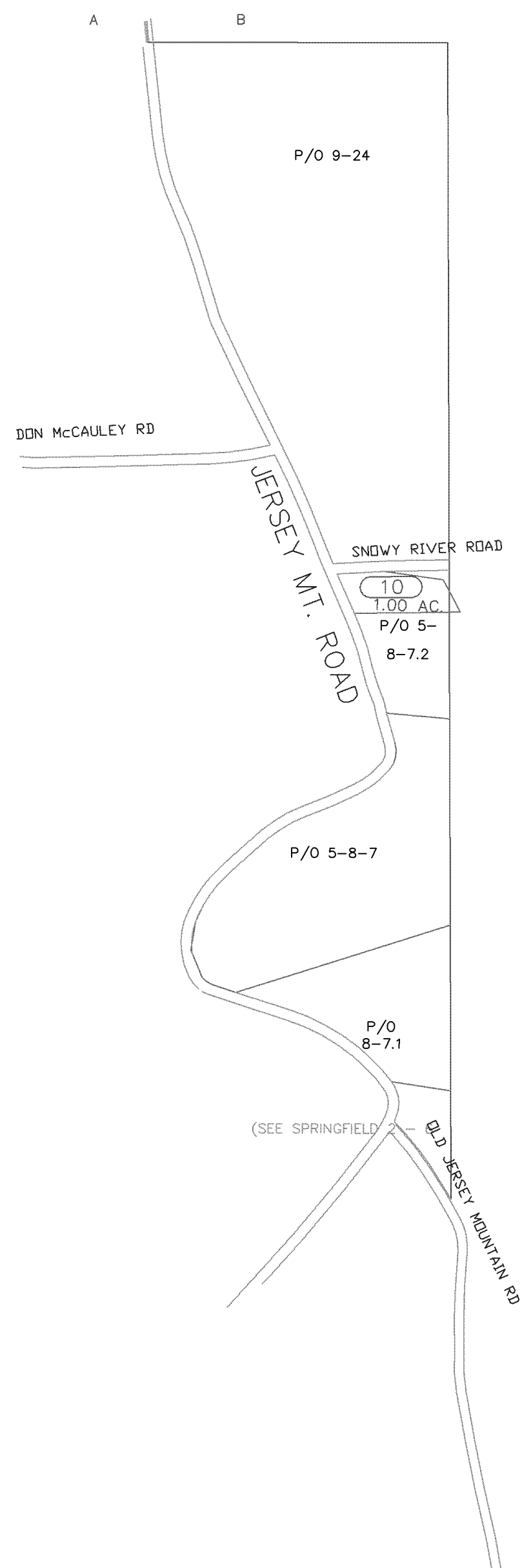
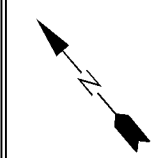


SPRINGFIELD DISTRICT



WV LEGISLATIVE REGULATION
TITLE 189 SERIES 5 1991
ARTICLE 5 SECTION 5.1

Reproduction of tax maps prohibited -
No person may reproduce, copy, distribute
or sell copies of tax maps prepared by
the counties without having first obtained
the written permission of the county
assessor.



Legend

Property line	Original lot line
Edge of Pavement	Deed lot number in parenthesis (15)
Corporation line	Parcel or index number 999.3
District line	Improvement
County line	Railroad
State line	

Revisions

1	AS OF JULY 1 1996	KWS	9	AS OF JULY 1 2005	JVB
2	AS OF JULY 1 1997	KWS	10	AS OF JULY 1 2006	JVB
3	AS OF JULY 1 1999	JVB	11		
4	AS OF JULY 1 2000	JVB	12		
5	AS OF JULY 1 2001	JVB	13		
6	AS OF JULY 1 2002	JVB	14		
7	AS OF JULY 1 2003	JVB	15		
8	AS OF JULY 1 2004	JVB	16		

MAP REFERENCE

		10
	1	9
	1A	8

HAMPSHIRE COUNTY - WEST VIRGINIA

Office of Assessor

For Tax Purposes Only

AS OF JULY 1

GORE

Map No.: 1 FILE NAME:
Aerial Photography: 4/59 Date of Map: 10/59
Photo No.: 3-16 Scale: 1 inch = 400 ft