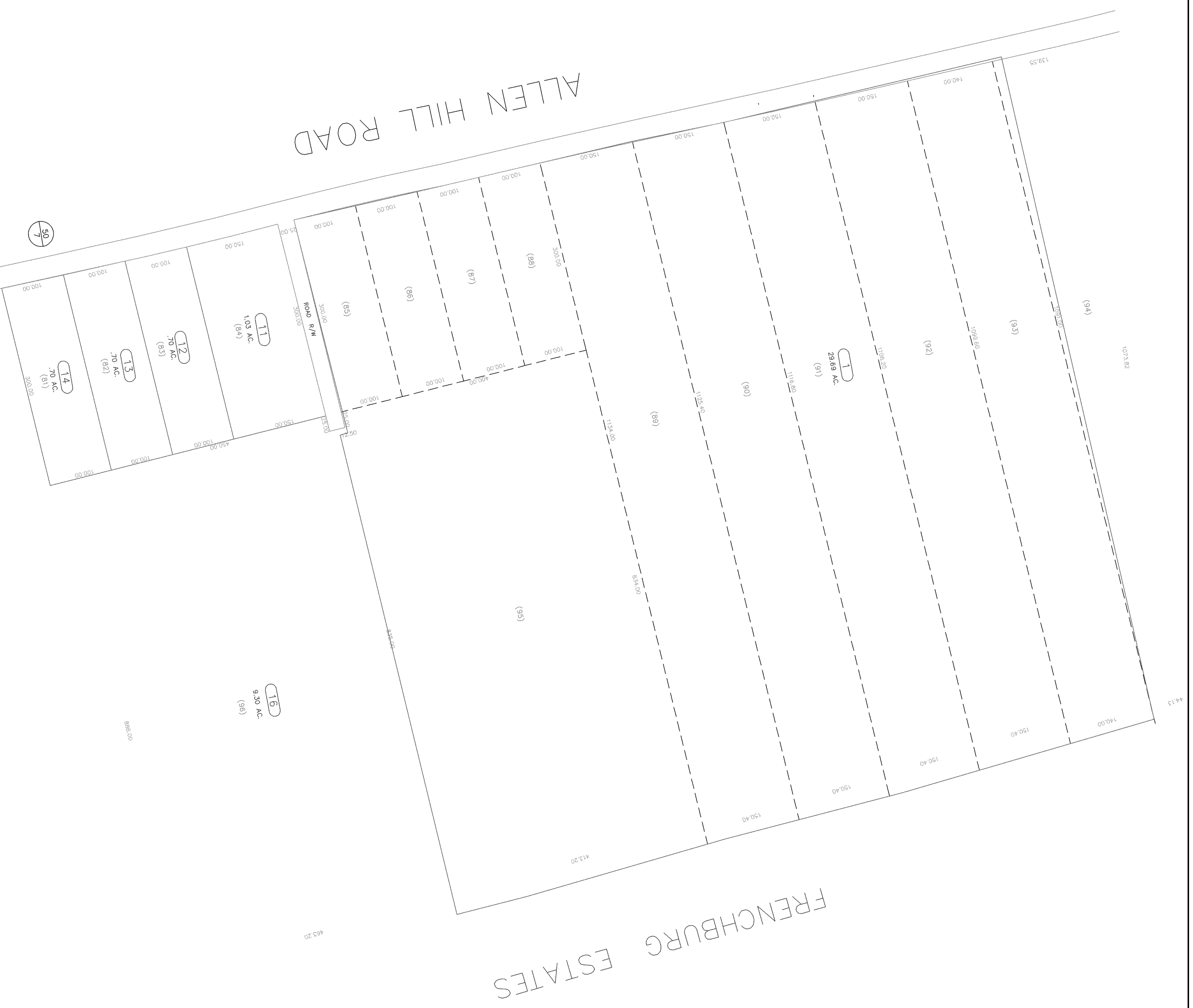


ALLEN HILL ROAD

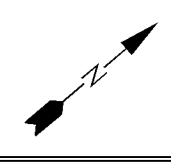
FRENCHBURG ESTATES



WV LEGISLATIVE REGULATION
TITLE 189 SERIES 5 1991
ARTICLE 5 SECTION 5.1

Reproduction of tax maps prohibited -
No person may reproduce, copy, distribute
or otherwise disseminate any information
contained on this map without the written
permission of the county assessor.

TAX MAPS DIGITALLY REPRODUCED BY: COMPUTER MAPPING CONSULTANTS, INC. 21550



Legend

- Property line ————
- Edge of pavement - - - - -
- Corporation line - - - - -
- District line - - - - -
- County line - - - - -
- State line - - - - -
- Original lot line ————
- Deed lot number in parentheses (15)
- Parcel or rider number 593
- Improvement - - - - -
- Roadway - - - - -

Revisions

1 AS OF JULY 1 1996	KWS	9 AS OF JULY 1 2005	JVB
2 AS OF JULY 1 1997	KWS	10 AS OF JULY 1 2006	JVB
3 AS OF JULY 1 1999	JVB	11	
4 AS OF JULY 1 2000	JVB	12	
5 AS OF JULY 1 2001	JVB	13	
6 AS OF JULY 1 2002	JVB	14	
7 AS OF JULY 1 2003	JVB	15	
8 AS OF JULY 1 2004	JVB	16	

MAP REFERENCE

		5D	

HAMPSHIRE COUNTY — WEST VIRGINIA

Office of Assessor
For Tax Purposes Only
AS OF JULY 1

GORE

Map No.: **5D** FILE NAME:
Zone/Aerial Photography: **4/59** Date of Map: **8/59**
Photo No.: **5-10** Scale: