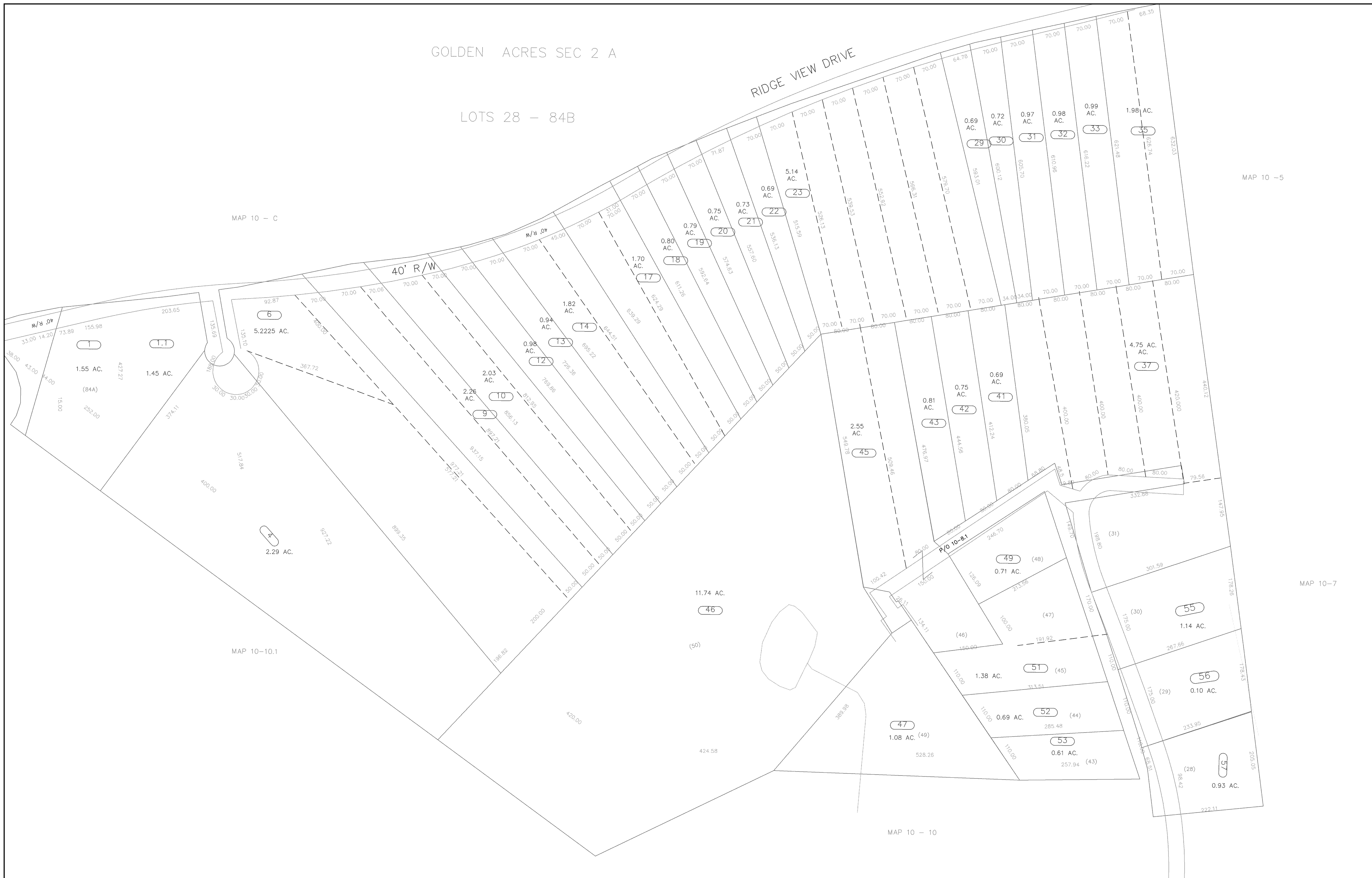
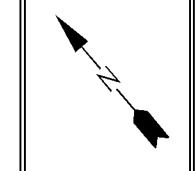


GOLDEN ACRES SEC 2 A

LOTS 28 - 84B



WV LEGISLATIVE REGULATION  
TITLE 189 SERIES 5 1991  
ARTICLE 5 SECTION 5.1  
Reproduction of tax maps prohibited -  
No person may reproduce, copy, distribute  
or sell copies of tax maps prepared by  
the counties without having first obtained  
the written permission of the county  
assessor.



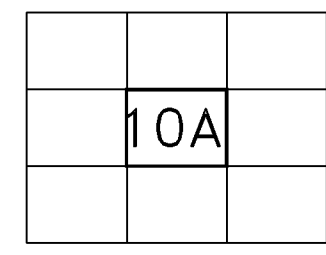
Legend

|                  |                                     |
|------------------|-------------------------------------|
| Property line    | Original lot line                   |
| Edge of Pavement | Deed lot number in parenthesis (15) |
| Corporation line | Parcel or index number 999.3        |
| District line    | Improvement                         |
| County line      | Railroad                            |
| State line       |                                     |

Revisions

|   |                   |     |    |                   |     |
|---|-------------------|-----|----|-------------------|-----|
| 1 | AS OF JULY 1 1996 | KWS | 9  | AS OF JULY 1 2005 | JVB |
| 2 | AS OF JULY 1 1997 | KWS | 10 | AS OF JULY 1 2006 | JVB |
| 3 | AS OF JULY 1 1999 | JVB | 11 |                   |     |
| 4 | AS OF JULY 1 2000 | JVB | 12 |                   |     |
| 5 | AS OF JULY 1 2001 | JVB | 13 |                   |     |
| 6 | AS OF JULY 1 2002 | JVB | 14 |                   |     |
| 7 | AS OF JULY 1 2003 | JVB | 15 |                   |     |
| 8 | AS OF JULY 1 2004 | JVB | 16 |                   |     |

MAP REFERENCE



HAMPSHIRE COUNTY - WEST VIRGINIA  
Office of Assessor  
For Tax Purposes Only

SHERMAN

Map No.: 10A FILE NAME: \_\_\_\_\_  
Aerial Photography: \_\_\_\_\_ Date of Map: 9/73  
Photo No.: \_\_\_\_\_ Scale: 1 inch = 100 ft