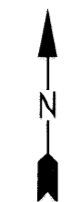




For Tax Purposes Only

Prepared by  
**MICHAEL BAKER, JR., INC.**  
 Consulting Engineers  
 Rochester, Pennsylvania



**Legend**

Property line	—————	Original lot line	-----
Edge of Pavement	- - - - -	Dead lot number in parenthesis	(15)
Corporation line	—————	Parcel or index number	699.3
District line	—————	Improvement	o
County line	—————	Railroad	+ + + + +
State line	—————		

**Revisions**

1	9
2	10
3	11
4	12
5	13
6	14
7	15
8	16

**MAP REFERENCE**

4	2	2	3
4	4	2	4
4	6	2	6

**HARDY COUNTY**

Office of Assessor

For Tax Purposes Only

**SOUTHFORK**

Map No.: **442** FILE NAME: SF05-442.DWG  
 Date, Aerial Photography: 11/61 Date of Map: 12/62  
 Photo No.: \_\_\_\_\_ Scale: 1" = 400'