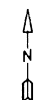


For Tax Purposes Only

Prepared by  
**MICHAEL BAKER, JR., INC.**  
 Consulting Engineers  
 Rochester, Pennsylvania



**Legend**

Property line	—————	Original lot line	-----
Edge of Pavement	- - - - -	Dead lot number in parenthesis	(15)
Corporation line	-----	Parcel or index number	999.9
District line	-----	Improvement	o
County line	-----	Railroad	+++++
State line	-----		

**Revisions**

1	8/25/06	Parcels 8 & 8.1	9
2	8/25/06	Parcels 26	10
3			11
4			12
5			13
6			14
7			15
8			16

**MAP REFERENCE**

233	234	235
253	254	255
273	274	275

**HARDY COUNTY**

Office of Assessor  
 For Tax Purposes Only

**CAPON**

Map No.: **254** FILE NAME: CA01-254.DWG  
 Date, Aerial Photography: 11/61 Date of Map: 12/62  
 Photo No.: Scale: 1" = 400'