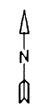


For Tax Purposes Only

Prepared by
MICHAEL BAKER, JR., INC.
 Consulting Engineers
 Rochester, Pennsylvania



Legend

Property line	—————	Original lot line	- - - - -
Edge of Pavement	- - - - -	Dead lot number in parenthesis (13)	
Corporation line	—————	Parcel or index number	999.9
District line	- - - - -	Improvement	o
County line	—————	Railroad	+ + + + +
State line	—————		

Revisions

1	9
2	10
3	11
4	12
5	13
6	14
7	15
8	16

MAP REFERENCE

371	372	373
391	392	393
411	412	

HARDY COUNTY
 Office of Assessor
 For Tax Purposes Only

CAPON

Map No. **392** FILE NAME: CA01-392.DWG
 Date, Aerial Photography: 11/61 Date of Map: 12/62
 Photo No.: Scale: 1" = 400'