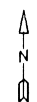


For Tax Purposes Only

Prepared by  
**MICHAEL BAKER, JR., INC.**  
 Consulting Engineers  
 Rochester, Pennsylvania



**Legend**

Property line	—————	Original lot line	- - - - -
Edge of Pavement	- - - - -	Dead lot number in parenthesis (15)	
Corporation line	—————	Parcel or index number	(999.9)
District line	- - - - -	Improvement	o
County line	- - - - -	Railroad	+ + + + +
State line	- - - - -		

**Revisions**

1	9
2	10
3	11
4	12
5	13
6	14
7	15
8	16

**MAP REFERENCE**

391	392	393
411	412	
431	432	

**HARDY COUNTY**

Office of Assessor

For Tax Purposes Only

**CAPON**

Map No. **412** FILE NAME: CA01-412.DWG  
 Date, Aerial Photography: 11/61 Date of Map: 12/62  
 Photo No.: \_\_\_\_\_ Scale: 1" = 400'