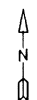


For Tax Purposes Only

Prepared by
MICHAEL BAKER, JR., INC.
 Consulting Engineers
 Rochester, Pennsylvania



Legend

Property line	-----	Original lot line	-----
Edge of Pavement	- - - - -	Dead lot number in parenthesis	(15)
Corporation line	-----	Parcel or index number	999.9
District line	-----	Improvement	o
County line	-----	Railroad	+++++
State line	-----		

Revisions

1	9
2	10
3	11
4	12
5	13
6	14
7	15
8	16

MAP REFERENCE

307	308	309
327	328	329
347	348	349

HARDY COUNTY

Office of Assessor
 For Tax Purposes Only

LOST RIVER

Map No. **328** FILE NAME: LR02-328.DWG
 Date, Aerial Photography: 11/61 Date of Map: 12/62
 Photo No.: Scale: 1" = 400'