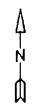


For Tax Purposes Only

Prepared by
MICHAEL BAKER, JR., INC.
 Consulting Engineers
 Rochester, Pennsylvania



Legend

Property line	Original lot line
Edge of Pavement	Dead lot number in parenthesis (15)
Corporation line	Parcel or index number 699.9
District line	Improvement
County line	Railroad
State line	

Revisions

1	9
2	10
3	11
4	12
5	13
6	14
7	15
8	16

MAP REFERENCE

426	427	428
446	447	448
466	467	468

HARDY COUNTY
 Office of Assessor
 For Tax Purposes Only

LOST RIVER

Map No. **447** FILE NAME: LR02-447.DWG
 Date, Aerial Photography: 11/61 Date of Map: 12/62
 Photo No.: Scale: 1" = 400'