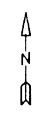




For Tax Purposes Only
 Prepared by
MICHAEL BAKER, JR., INC.
 Consulting Engineers
 Rochester, Pennsylvania



Legend

Property line	—————	Original lot line	- - - - -
Edge of Pavement	- - - - -	Dead lot number in parenthesis (15)	
Corporation line	- - - - -	Parcel or index number	559.9
District line	- - - - -	Improvement	o
County line	- - - - -	Railroad	+ + + + +
State line	- - - - -		

Revisions

1	9
2	10
3	11
4	12
5	13
6	14
7	15
8	16

MAP REFERENCE

448	449	450
468	469	
488		

HARDY COUNTY
 Office of Assessor
 For Tax Purposes Only

LOST RIVER

Map No. **469** FILE NAME: LR02-469.DWG
 Date Aerial Photography: 11/61 Date of Map: 12/62
 Photo No.: Scale: 1" = 400'

TAX MAPS DIGITALLY REPRODUCED BY: COMPUTER MAPPING CONSULTANTS, INC.
 119 S. 3RD ST., OAKLAND, MD 21550