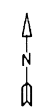


For Tax Purposes Only

Prepared by
MICHAEL BAKER, JR., INC.
 Consulting Engineers
 Rochester, Pennsylvania



Legend

| | | | |
|------------------|-----------|--------------------------------|-------|
| Property line | ----- | Original lot line | ----- |
| Edge of Pavement | - - - - - | Dead lot number in parenthesis | (15) |
| Corporation line | ----- | Parcel or index number | 599.9 |
| District line | ----- | Improvement | o |
| County line | ----- | Railroad | +++++ |
| State line | ----- | | |

Revisions

| | |
|---|----|
| 1 | 9 |
| 2 | 10 |
| 3 | 11 |
| 4 | 12 |
| 5 | 13 |
| 6 | 14 |
| 7 | 15 |
| 8 | 16 |

MAP REFERENCE

| | |
|-----|-----|
| 484 | 485 |
| 503 | 504 |
| 505 | 505 |
| 524 | 525 |

HARDY COUNTY
 Office of Assessor
 For Tax Purposes Only

LOST RIVER

Map No. **504** FILE NAME: LR02-504.DWG
 Date, Aerial Photography: 11/61 Date of Map: 12/62
 Photo No: Scale: 1" = 400'