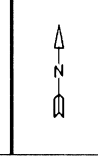


For Tax Purposes Only
 Prepared by
MICHAEL BAKER, JR., INC.
 Consulting Engineers
 Rochester, Pennsylvania



Legend	
Property line	—————
Edge of Pavement	- - - - -
Corporation line	— · — · —
District line	- - - - -
County line	- - - - -
State line	- - - - -
Original lot line	- - - - -
Dead lot number in parenthesis	(15)
Parcel or index number	3333
Improvement	o
Railroad	+ + + + +

Revisions	
1	9
2	10
3	11
4	12
5	13
6	14
7	15
8	16

MAP REFERENCE	
189190	
209210	
229230	

HARDY COUNTY
 Office of Assessor
 For Tax Purposes Only

MOOREFIELD
 Map No. **210** FILE NAME: MOO3-210.DWG
 Date Aerial Photography: 11/61 Date of Map: 12/62
 Photo No.: Scale: 1" = 400'

TAX MAPS DIGITALLY REPRODUCED BY: COMPUTER MAPPING CONSULTANTS, INC.
 119 S. 3RD ST., OAKLAND, MD 21550