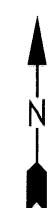




For Tax Purposes Only

Prepared by
MICHAEL BAKER, JR., INC.
 Consulting Engineers
 Rochester, Pennsylvania



Legend

Property line	-----	Original lot line	-----
Edge of Pavement	- - - - -	Deed lot number in parenthesis (15)	
Corporation line	- · - · -	Parcel or index number	⊙ 999 ⊙
District line	-----	Improvement	o
County line	-----	Railroad	+ + + + +
State line	-----		

Revisions

1	9
2	10
3	11
4	12
5	13
6	14
7	15
8	16

MAP REFERENCE

	222	223
	242	243
261	262	263

HARDY COUNTY

Office of Assessor

For Tax Purposes Only

MOOREFIELD

Map No.: **242** FILE NAME: MO03-242.DWG
 Date, Aerial Photography: 11/61 Date of Map: 12/62
 Photo No.: _____ Scale: 1" = 400'