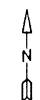




For Tax Purposes Only

Prepared by  
**MICHAEL BAKER, JR., INC.**  
 Consulting Engineers  
 Rochester, Pennsylvania



**Legend**

Property line	-----	Original lot line	-----
Edge of Pavement	- - - - -	Dead lot number in parenthesis	(15)
Corporation line	-----	Parcel or index number	999.9
District line	-----	Improvement	o
County line	-----	Railroad	+++++
State line	-----		

**Revisions**

1	9
2	10
3	11
4	12
5	13
6	14
7	15
8	16

**MAP REFERENCE**

229	230
249	250
269	270

**HARDY COUNTY**  
 Office of Assessor  
 For Tax Purposes Only

**MOOREFIELD**

Map No. **250** FILE NAME: MO03-250.DWG  
 Date, Aerial Photography: 11/61 Date of Map: 12/62  
 Photo No: Scale: 1" = 400'