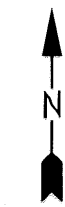




For Tax Purposes Only

Prepared by  
**MICHAEL BAKER, JR., INC.**  
 Consulting Engineers  
 Rochester, Pennsylvania



**Legend**

Property line	— — — — —	Original lot line	- - - - -
Edge of Pavement	- - - - -	Deed lot number in parenthesis	(15)
Corporation line	- - - - -	Parcel or index number	999.9
District line	- - - - -	Improvement	o
County line	- - - - -	Railroad	+ + + + +
State line	- - - - -		

**Revisions**

1	9
2	10
3	11
4	12
5	13
6	14
7	15
8	16

**MAP REFERENCE**

243	244	245
263	264	265
283	284	285

**HARDY COUNTY**

Office of Assessor

For Tax Purposes Only

**MOOREFIELD**

Map No.: **264** FILE NAME: MO03-264.DWG  
 Date Aerial Photography: 11/61 Date of Map: 12/62  
 Photo No.: \_\_\_\_\_ Scale: 1" = 400'