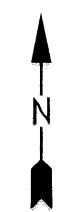


For Tax Purposes Only

Prepared by  
**MICHAEL BAKER, JR., INC.**  
 Consulting Engineers  
 Rochester, Pennsylvania



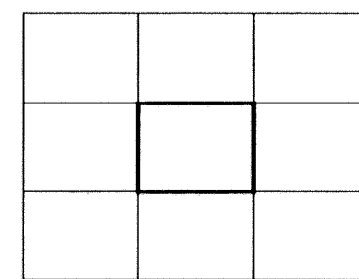
Legend

|                  |           |                                |           |
|------------------|-----------|--------------------------------|-----------|
| Property line    | —————     | Original lot line              | - - - - - |
| Edge of Pavement | - - - - - | Deed lot number in parenthesis | (15)      |
| Corporation line | - - - - - | Parcel or index number         | 699.9     |
| District line    | —————     | Improvement                    | o         |
| County line      | —————     | Railroad                       | + + + + + |
| State line       | —————     |                                |           |

Revisions

|   |    |
|---|----|
| 1 | 9  |
| 2 | 10 |
| 3 | 11 |
| 4 | 12 |
| 5 | 13 |
| 6 | 14 |
| 7 | 15 |
| 8 | 16 |

MAP REFERENCE



**HARDY COUNTY**

Office of Assessor  
 For Tax Purposes Only

**MOOREFIELD**

Map No.: **264-A** FILE NAME: MC03264A.DWG  
 Date, Aerial Photography: 11/61 Date of Map: 12/62  
 Photo No.: \_\_\_\_\_ Scale: 1" = 100'