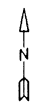


For Tax Purposes Only

Prepared by  
**MICHAEL BAKER, JR., INC.**  
 Consulting Engineers  
 Rochester, Pennsylvania



**Legend**

Property line	—————	Original lot line	-----
Edge of Pavement	- - - - -	Deed lot number in parenthesis (15)	
Corporation line	-----	Parcel or index number	999
District line	-----	Improvement	o
County line	-----	Railroad	+++++
State line	-----		

**Revisions**

1	9
2	10
3	11
4	12
5	13
6	14
7	15
8	16

**MAP REFERENCE**

246	247	248
266	267	268
286	287	288

**HARDY COUNTY**

Office of Assessor

For Tax Purposes Only

**MOOREFIELD**

Map No. **267** FILE NAME: MO03-267.DWG  
 Date Aerial Photography: 11/61 Date of Map: 12/62  
 Photo No.: Scale: 1" = 400'