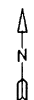


For Tax Purposes Only

Prepared by
MICHAEL BAKER, JR., INC.
 Consulting Engineers
 Rochester, Pennsylvania



Legend

Property line	—————	Original lot line	-----
Edge of Pavement	- - - - -	Dead lot number in parenthesis	(15)
Corporation line	-----	Parcel or index number	999.9
District line	-----	Improvement	o
County line	-----	Railroad	+ + + + +
State line	-----		

Revisions

1	9
2	10
3	11
4	12
5	13
6	14
7	15
8	16

MAP REFERENCE

268	269	270
288	289	
308	309	

HARDY COUNTY
 Office of Assessor
 For Tax Purposes Only

MOOREFIELD

Map No. **289** FILE NAME: MO03-289.DWG
 Date Aerial Photography: 11/61 Date of Map: 12/62
 Photo No.: Scale: 1" = 400'