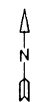




For Tax Purposes Only

Prepared by
MICHAEL BAKER, JR., INC.
 Consulting Engineers
 Rochester, Pennsylvania



Legend

Property line	—————	Original lot line	- - - - -
Edge of Pavement	- - - - -	Dead lot number in parenthesis (15)	
Corporation line	—————	Parcel or index number	999 3
District line	—————	Improvement	o
County line	—————	Railroad	+ + + + +
State line	—————		

Revisions

1	9
2	10
3	11
4	12
5	13
6	14
7	15
8	16

MAP REFERENCE

325	326	
345	346	

HARDY COUNTY
 Office of Assessor
 For Tax Purposes Only

MOOREFIELD

Map No. **346** FILE NAME: MO03-346.DWG
 Date, Aerial Photography, 11/61 Date of Map: 12/62
 Photo No.: Scale: 1" = 400'