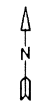


For Tax Purposes Only

Prepared by
MICHAEL BAKER, JR., INC.
 Consulting Engineers
 Rochester, Pennsylvania



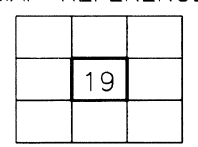
Legend

Property line	Original lot line
Edge of Pavement	Dead lot number in parenthesis (15)
Corporation line	Parcel or index number 9999
District line	Improvement ○
County line	Railroad + + + + +
State line	

Revisions

1	9
2	10
3	11
4	12
5	13
6	14
7	15
8	16

MAP REFERENCE



HARDY COUNTY
 Office of Assessor
 For Tax Purposes Only

MOOREFIELD CORPORATION

Map No. **19** FILE NAME: MCO4-019.DWG
 Date Aerial Photography: 11/61 Date of Map: 12/62
 Photo No.: Scale: 1" = 100'