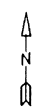




For Tax Purposes Only

Prepared by  
**MICHAEL BAKER, JR., INC.**  
 Consulting Engineers  
 Rochester, Pennsylvania

TAX MAPS DIGITALLY REPRODUCED BY: COMPUTER MAPPING CONSULTANTS, INC.  
 119 S. 3RD ST., OAKLAND, MD 21550



**Legend**

Property line	Original lot line
Edge of Pavement	Dead lot number in parenthesis (15)
Corporation line	Parcel or index number (599.3)
District line	Improvement
County line	Railroad
State line	

**Revisions**

1	9
2	10
3	11
4	12
5	13
6	14
7	15
8	16

**MAP REFERENCE**

284
284 04 06
03

**HARDY COUNTY**

Office of Assessor

For Tax Purposes Only

**MOOREFIELD CORPORATION**

Map No. **04** FILE NAME: MCO4-004.DWG  
 Date Aerial Photography: 11/61 Date of Map: 12/62  
 Photo No.: Scale: 1" = 100'