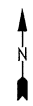


For Tax Purposes Only

Prepared by  
**MICHAEL BAKER, JR., INC.**  
 Consulting Engineers  
 Rochester, Pennsylvania



**Legend**

Property line	—————	Original lot line	-----
Edge of Pavement	—————	Deed lot number in parenthesis (15)	
Corporation line	-----	Parcel or index number	(15)
District line	-----	Improvement	o
County line	-----	Railroad	+++++
State line	-----		

**Revisions**

1	March 15, 2011	9
2		10
3		11
4		12
5		13
6		14
7		15
8		16

**MAP REFERENCE**


**HARDY COUNTY**  
 Office of Assessor  
 For Tax Purposes Only

**SOUTHFORK**

Map No.: **342-A** FILE NAME: SF0534A.DWG  
 Date Aerial Photography: 11/61 Date of Map: 3/2011  
 Photo No.: \_\_\_\_\_ Scale: \_\_\_\_\_