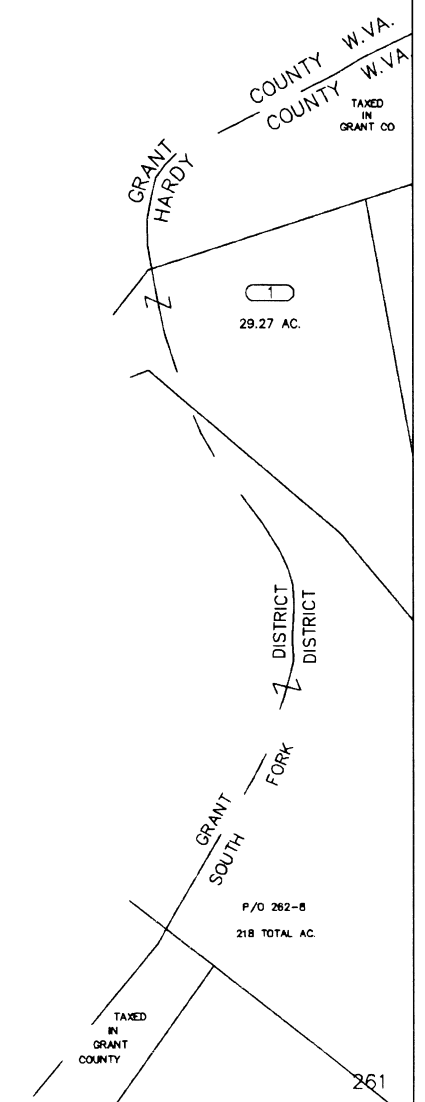


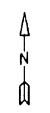
261



261

For Tax Purposes Only

Prepared by  
**MICHAEL BAKER, JR., INC.**  
 Consulting Engineers  
 Rochester, Pennsylvania



Legend

Property line	—————	Original lot line	- - - - -
Edge of Pavement	- · - · - · -	Dead lot number in parenthesis	(15)
Corporation line	- - - - -	Parcel or index number	①②③
District line	- - - - -	Improvement	○
County line	- - - - -	Railroad	+ + + + +
State line	- - - - -		

Revisions

1	9
2	10
3	11
4	12
5	13
6	14
7	15
8	16

MAP REFERENCE

		242
261	262	
281	282	

**HARDY COUNTY**  
 Office of Assessor  
 For Tax Purposes Only

SOUTHFORK

Map No.: **261** FILE NAME: SF05-261.DWG  
 Date Aerial Photography: 11/61 Date of Map: 12/62  
 Photo No.: \_\_\_\_\_ Scale: 1" = 400'