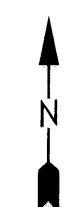


For Tax Purposes Only

Prepared by
MICHAEL BAKER, JR., INC.
 Consulting Engineers
 Rochester, Pennsylvania



Legend

Property line	—	Original lot line	- - - - -
Edge of Pavement	- - - - -	Deed lot number in parenthesis	(15)
Corporation line	- - - - -	Parcel or index number	699.9
District line	- - - - -	Improvement	o
County line	- - - - -	Railroad	+ + + + +
State line	- - - - -		

Revisions

1	9
2	10
3	11
4	12
5	13
6	14
7	15
8	16

MAP REFERENCE

261	262	263
281	282	283
301	302	303

HARDY COUNTY

Office of Assessor
 For Tax Purposes Only

SOUTHFORK

Map No.: **282** FILE NAME: SF05-282.DWG
 Date, Aerial Photography: 11/61 Date of Map: 12/62
 Photo No.: Scale: 1" = 400'