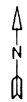




For Tax Purposes Only

Prepared by
MICHAEL BAKER, JR., INC.
 Consulting Engineers
 Rochester, Pennsylvania



Legend

Property line	—————	Original lot line	- - - - -
Edge of Pavement	- · - · - ·	Dead lot number in parenthesis (15)	○
Corporation line	- · - · - ·	Parcel or index number	③③③
District line	- - - - -	Improvement	○
County line	- - - - -	Railroad	+ + + + +
State line	- - - - -		

Revisions

1	9
2	10
3	11
4	12
5	13
6	14
7	15
8	16

MAP REFERENCE

325		
345	346	
365	366	

HARDY COUNTY
 Office of Assessor
 For Tax Purposes Only

SOUTHFORK

Map No. **346** FILE NAME: SF05-346.DWG
 Date Aerial Photography: 11/61 Date of Map: 12/62
 Photo No.: Scale: 1" = 400'