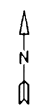




For Tax Purposes Only

Prepared by  
**MICHAEL BAKER, JR., INC.**  
 Consulting Engineers  
 Rochester, Pennsylvania



**Legend**

Property line	—————	Original lot line	- - - - -
Edge of Pavement	- - - - -	Deed lot number in parenthesis	(15)
Corporation line	—————	Parcel or index number	999 3
District line	—————	Improvement	o
County line	—————	Railroad	+ + + + +
State line	—————		

**Revisions**

1	9
2	10
3	11
4	12
5	13
6	14
7	15
8	16

**MAP REFERENCE**

522	523
542	543
562	563

**HARDY COUNTY**  
 Office of Assessor  
 For Tax Purposes Only

**SOUTHFORK**

Map No. **543** FILE NAME: SF05-543.DWG  
 Date, Aerial Photography: 11/61 Date of Map: 12/62  
 Photo No.: Scale: 1" = 400'