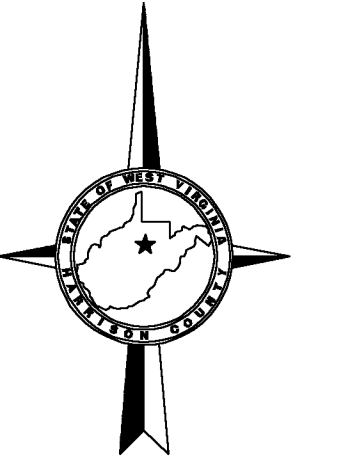
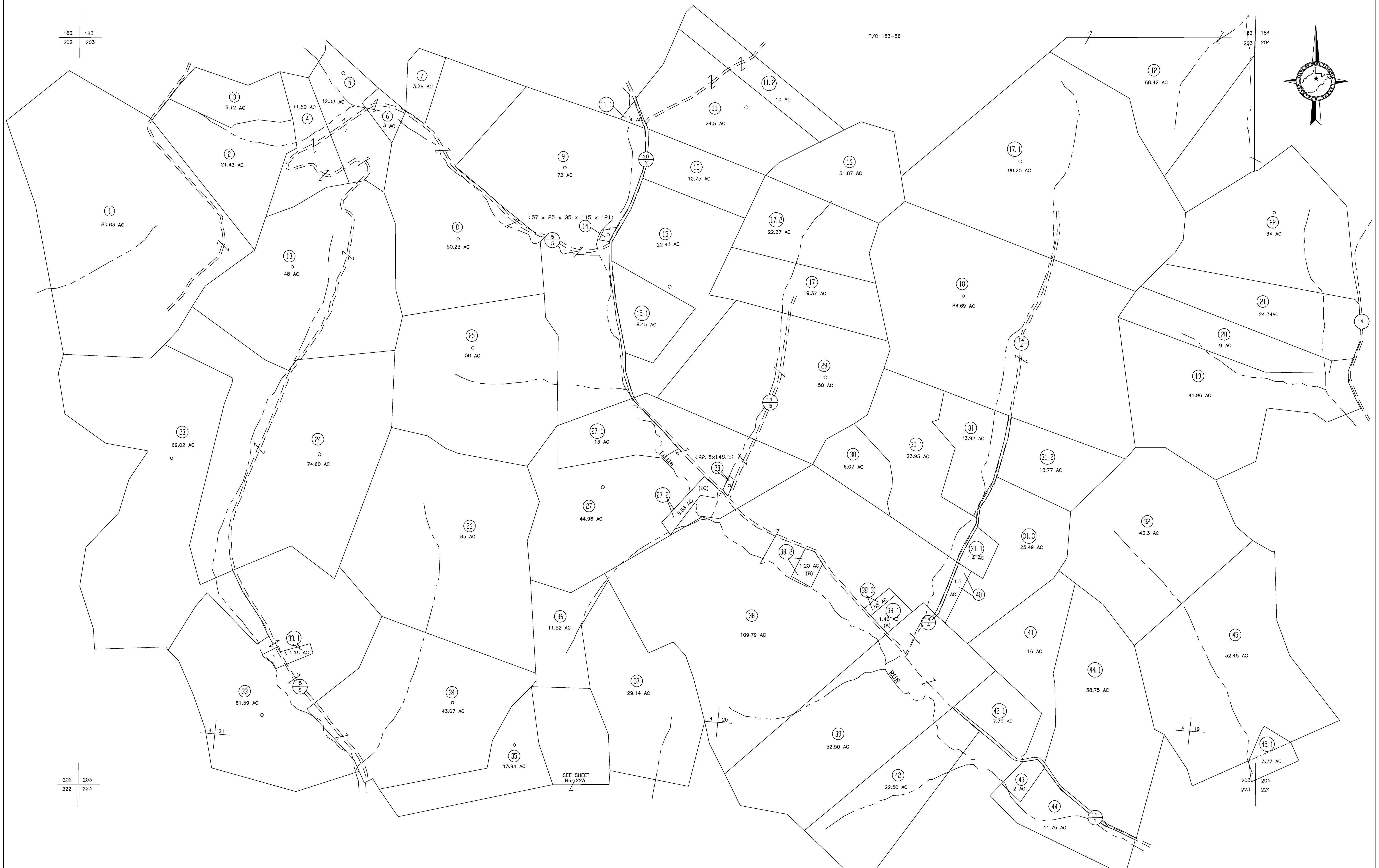


182 183  
202 203

183 184  
203 204



P/O 183-56



202 203  
222 223

203 204  
223 224

For Tax Purposes Only

**CHERYL L. ROMANO**  
**HARRISON COUNTY ASSESSOR**

**LEGEND**

Property line	—	Deed lot number	(15)
Edge of pavement or roadway	- - - -	Parcel or Index number	XX
Corporation line	—	Improvement	o
District line	—	Railroad	—
County line	- - - -	Church	+
Original lot line	- - - - -	Cemetery	Δ
		Golf Course	δ
		School	⊕

**REVISIONS**

1	
2	
3	
4	
5	
6	
7	
8	

**RESTRICTION**

All tax maps created under the provisions of reappraisal legislation are the property of Harrison County West Virginia and the reproduction, copying distribution or sale of such tax maps or any copies thereof without the written permission of the Harrison County Assessor is prohibited by law.

**KEY MAP**

182	183	184
202	203	204
222	223	224

**HARRISON COUNTY**  
**STATE OF WEST VIRGINIA**  
**Office of Assessor**

DISTRICT  
SARDIS  
MAP NO:  
203

Date, Aerial Photography: April 1960 Date, Map: Sept. 1960  
Photo No: Scale: 1" = 400'