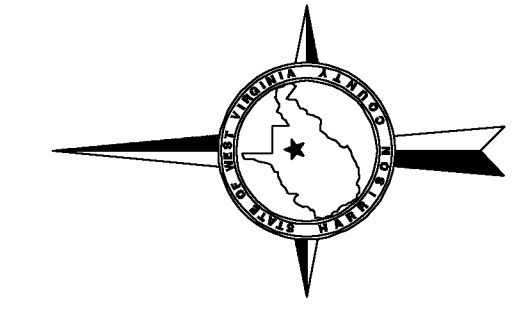
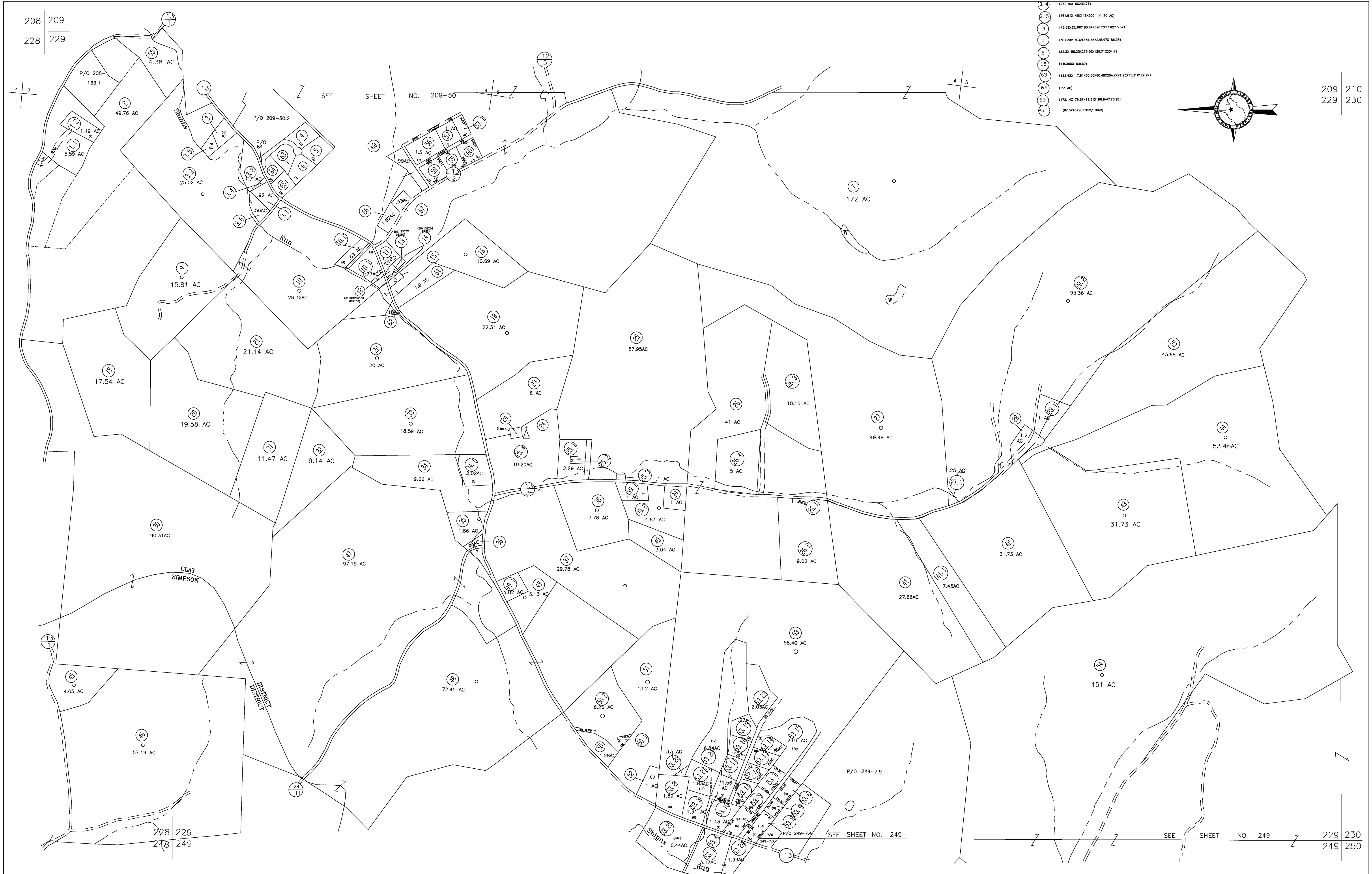


208 209  
228 229

- (3, 4) (242.180160236.71)
- (5, 5) (161.81414541184200 / .70 AC)
- (4) (48.8255.368180.843206.58173215.33)
- (5) (50.03215.328181.384228.47186.23)
- (6) (52.20186.232273.58125.710294.7)
- (15) (1406901160260)
- (63) (133.422117.81835.36880.480204.7371.23811.318172.99)
- (64) (53 AC)
- (65) (172.141798.8111.318166.84113.28)
- (65) (87.2643360.3452/.1042)



209 210  
229 230



208 229  
248 249

SEE SHEET NO. 249

SEE SHEET NO. 249 229 230  
249 250

For Tax Purposes Only

**CHERYL L. ROMANO**  
**HARRISON COUNTY ASSESSOR**

LEGEND	
Property line	—————
Edge of pavement or roadway	- - - - -
Corporation line	—————
District line	—————
County line	- - - - -
Original lot line	- - - - -
Deed lot number	(15)
Parcel or Index number	XX
Improvement	o
Railroad	—————
Church	+
Cemetery	Δ
Golf Course	δ
School	⊕

REVISIONS	
1	
2	
3	
4	
5	
6	
7	
8	

**RESTRICTION**

All tax maps created under the provisions of reappraisal legislation are the property of Harrison County West Virginia and the reproduction, copying distribution or sale of such tax maps or any copies thereof without the written permission of the Harrison County Assessor is prohibited by law.

KEY MAP		
208	209	210
228	229	230
248	249	250

**HARRISON COUNTY**  
**STATE OF WEST VIRGINIA**  
**Office of Assessor**

DISTRICT  
CLAY - SIMPSON  
MAP NO:  
229

Date, Aerial Photography: April 1960 Date, Map: Sept. 1960  
Photo No: Scale: 1" = 400'