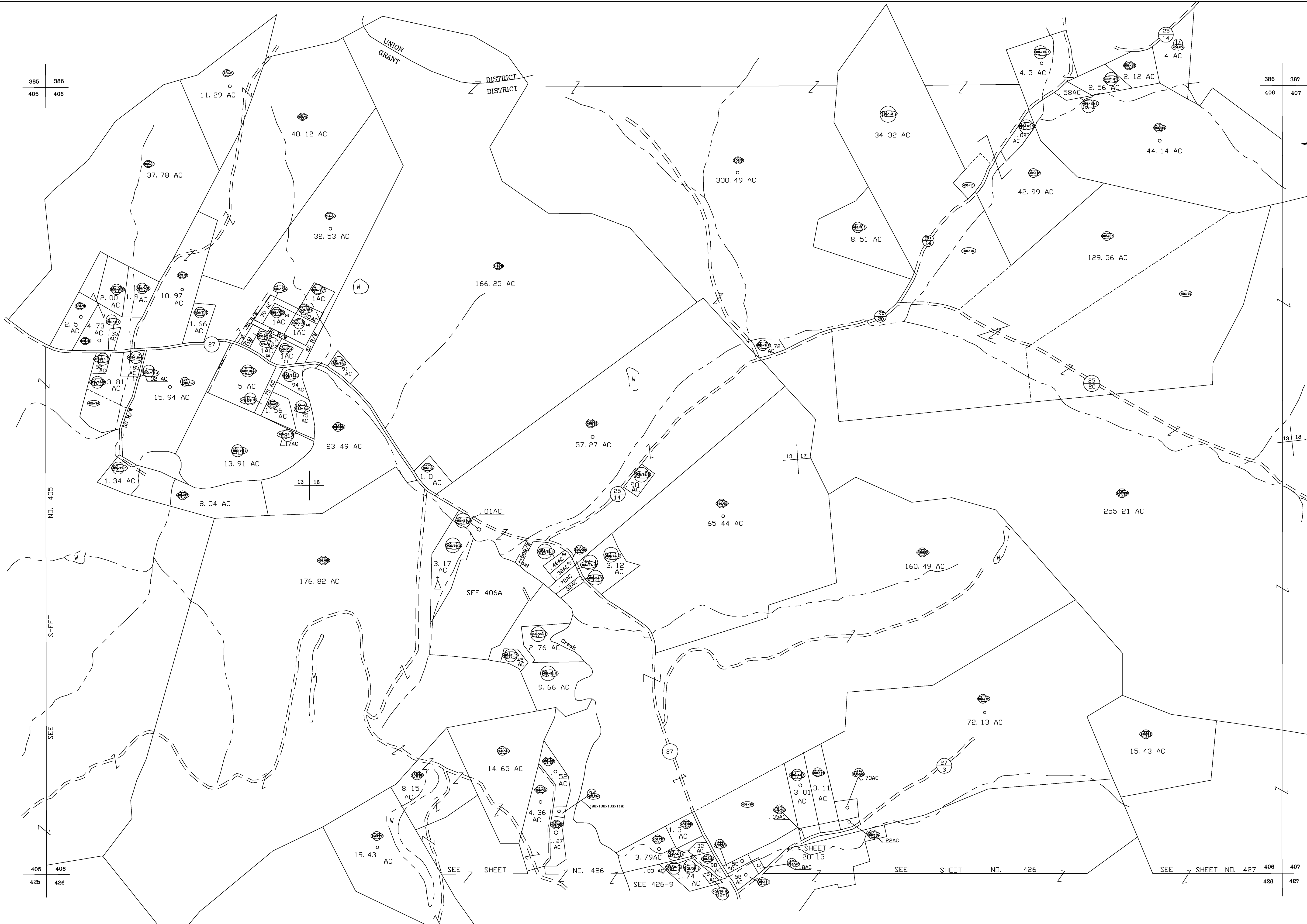
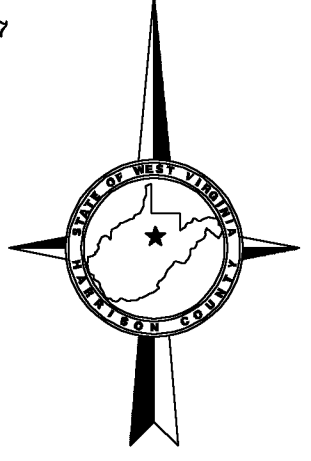


385 386
405 406

386 387
406 407



SHEET NO. 405

405 406
425 426

13 18

406 407
426 427

For Tax Purposes Only
CHERYL L. ROMANO
HARRISON COUNTY ASSESSOR

LEGEND	
Property line	—
Edge of pavement or roadway	- - - -
Corporation line	—
District line	—
County line	- - - -
Original lot line	- - - - -
Deed lot number	(15)
Parcel or Index number	XX
Improvement	o
Railroad	—
Church	+
Cemetery	Δ
Golf Course	δ
School	⊞

REVISIONS	
1	
2	
3	
4	
5	
6	
7	
8	

RESTRICTION

All tax maps created under the provisions of reappraisal legislation are the property of Harrison County West Virginia and the reproduction, copying distribution or sale of such tax maps or any copies thereof without the written permission of the Harrison County Assessor is prohibited by law.

KEY MAP		
385	386	387
405	406	407
425	426	427

HARRISON COUNTY
STATE OF WEST VIRGINIA
Office of Assessor

DISTRICT GRANT
MAP NO:
406

Date, Aerial Photography: April 1960 Date, Map: Sept. 1960
Photo No: Scale: 1" = 400'