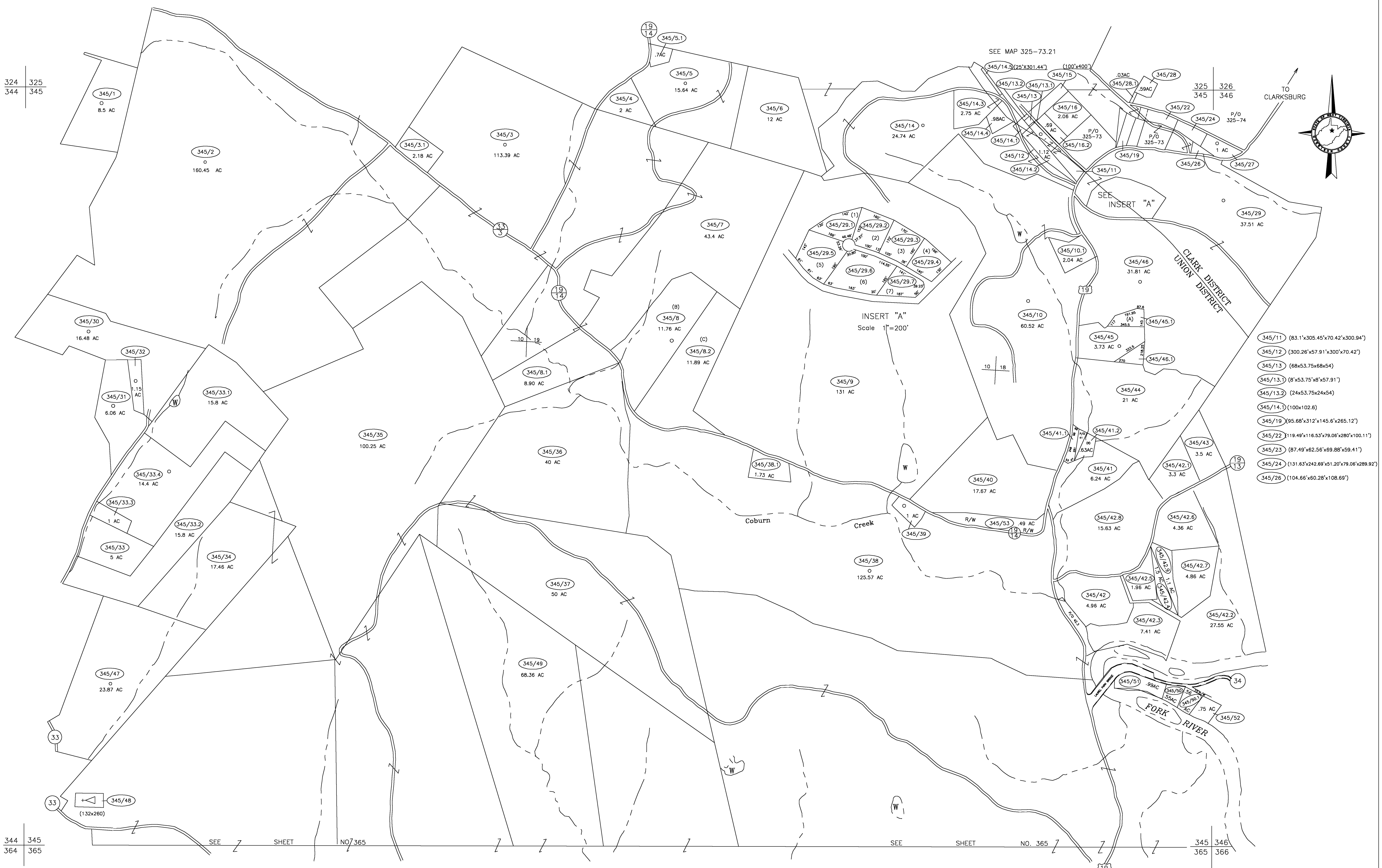


324 325
344 345



- 345/11 (83.1'x305.45'x70.42'x300.94')
- 345/12 (300.26'x57.91'x300'x70.42')
- 345/13 (68x53.75x68x54)
- 345/13.1 (8'x53.75'x8'x57.91')
- 345/13.2 (24x53.75x24x54)
- 345/14.1 (100x102.6)
- 345/19 (95.68'x312'x145.6'x265.12')
- 345/22 (119.49'x116.53'x79.06'x280'x100.11')
- 345/23 (87.49'x62.56'x89.88'x59.41')
- 345/24 (131.63'x242.69'x51.20'x79.06'x289.92')
- 345/26 (104.66'x60.28'x108.69')

344 345
364 365

SEE SHEET NO. 365

SEE SHEET NO. 365

345 346
365 366

For Tax Purposes Only
CHERYL L. ROMANO
HARRISON COUNTY ASSESSOR

LEGEND	
Property line	—————
Edge of pavement or roadway	- - - - -
Corporation line	—————
District line	—————
County line	- - - - -
Original lot line	- - - - -
Deed lot number	(15)
Parcel or Index number	XX
Improvement	o
Railroad	—————
Church	+
Cemetery	Δ
Golf Course	δ
School	⬢

REVISIONS	
1	
2	
3	
4	
5	
6	
7	
8	

RESTRICTION
All tax maps created under the provisions of reappraisal legislation are the property of Harrison County West Virginia and the reproduction, copying distribution or sale of such tax maps or any copies thereof without the written permission of the Harrison County Assessor is prohibited by law.

KEY MAP		
324	325	326
344	345	346
364	365	366

HARRISON COUNTY
STATE OF WEST VIRGINIA
Office of Assessor

DISTRICT
UNION - CLARK
MAP NO:
345
Date, Aerial Photography: April 1960 Date, Map: Sept. 1960
Photo No: Scale: 1" = 400'