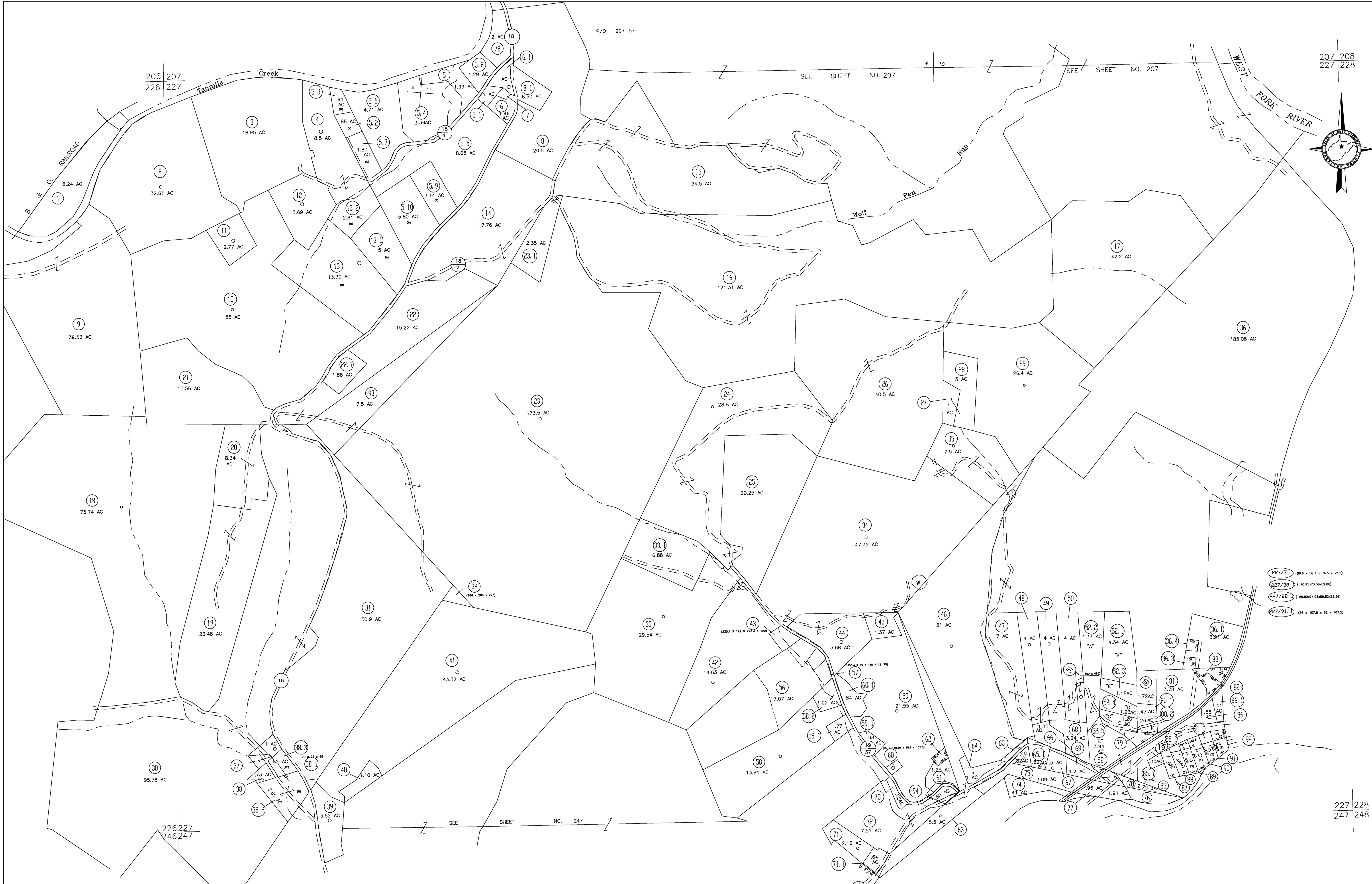
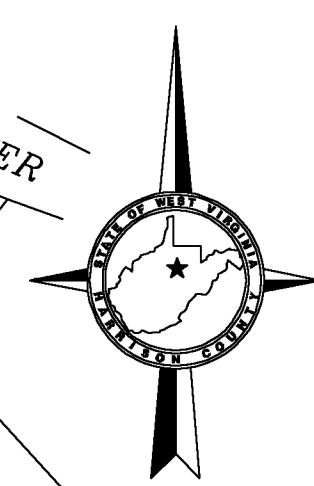


P/O 207-57

SEE SHEET NO. 207

SEE SHEET NO. 207

207 208
227 228



227/7 (86.4 x 58.7 x 74.5 x 75.2)
227/38 (70.25x73.3x69.6)
227/BB (89.83x74.08x69.82x82.34)
227/91 (56 x 107.5 x 62 x 107.5)

227 228
247 248

For Tax Purposes Only

CHERYL L. ROMANO
HARRISON COUNTY ASSESSOR

LEGEND	
Property line	—————
Edge of pavement or roadway	- - - - -
Corporation line	—————
District line	—————
County line	—————
Original lot line	- - - - -
Deed lot number	(15)
Parcel or Index number	XX
Improvement	o
Railroad	—————
Church	+
Cemetery	Δ
Golf Course	δ
School	⊕

REVISIONS	
1	
2	
3	
4	
5	
6	
7	
8	

RESTRICTION

All tax maps created under the provisions of reappraisal legislation are the property of Harrison County West Virginia and the reproduction, copying distribution or sale of such tax maps or any copies thereof without the written permission of the Harrison County Assessor is prohibited by law.

KEY MAP		
206	207	208
226	227	228
246	247	248

HARRISON COUNTY
STATE OF WEST VIRGINIA
Office of Assessor

DISTRICT EAGLE
MAP NO: 227

Date, Aerial Photography: April 1960 Date, Map: Sept. 1960
Photo No: Scale: 1" = 400'