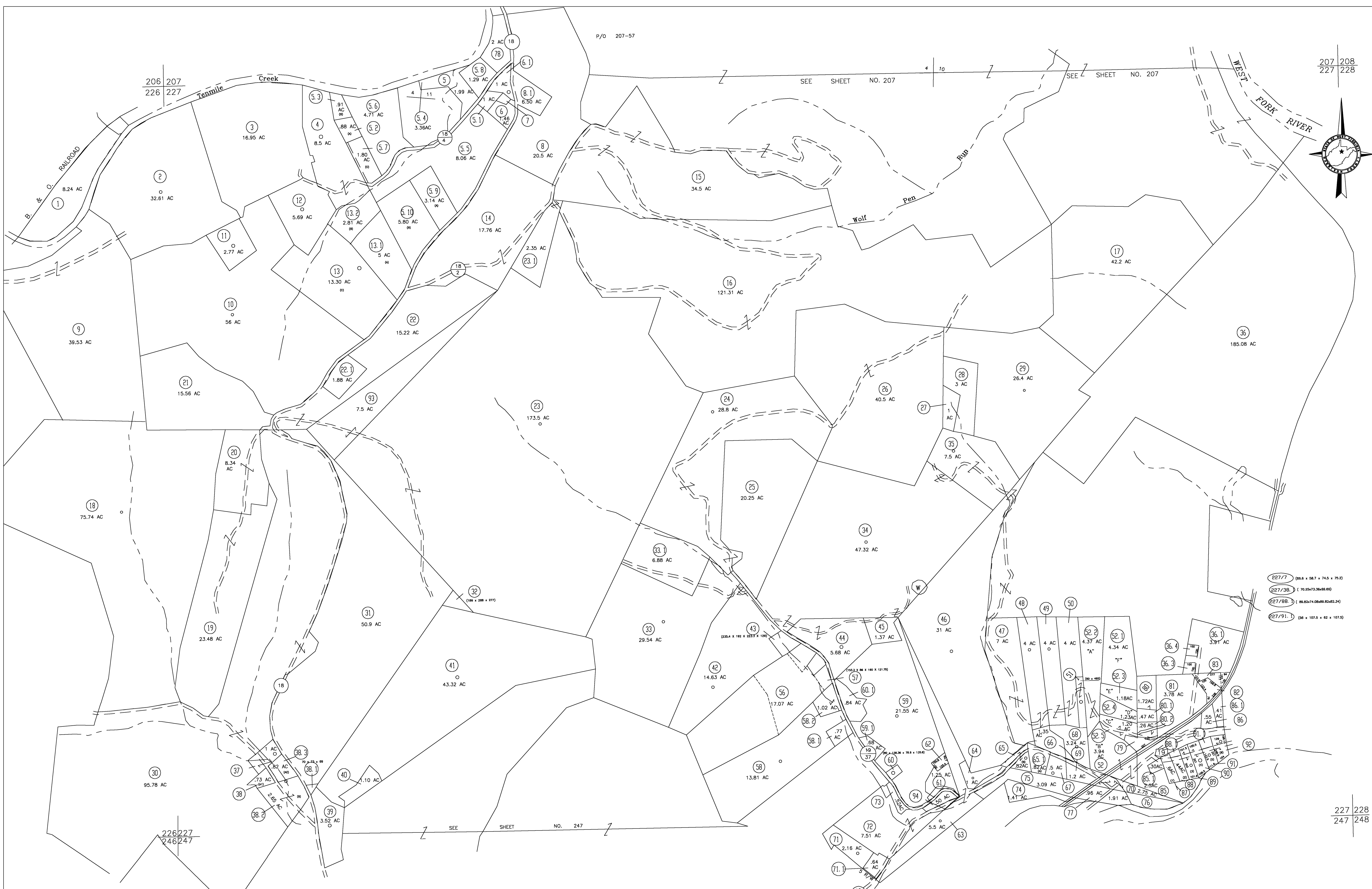
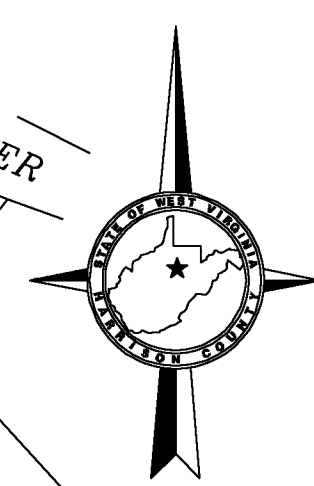


P/O 207-57

SEE SHEET NO. 207

SEE SHEET NO. 207

207 208  
227 228



227/7 (85.4 x 58.7 x 74.5 x 75.2)  
227/38 ( 70.25x73.3x69.6)  
227/BB ( 89.83x74.08x69.82x82.34)  
227/91 ( 56 x 107.5 x 62 x 107.5)

227 228  
247 248

For Tax Purposes Only

**CHERYL L. ROMANO**  
**HARRISON COUNTY ASSESSOR**

**LEGEND**

|                             |       |                        |      |
|-----------------------------|-------|------------------------|------|
| Property line               | ————— | Deed lot number        | (15) |
| Edge of pavement or roadway | ----- | Parcel or index number | XX   |
| Corporation line            | ----- | Improvement            | o    |
| District line               | ----- | Railroad               | —+—  |
| County line                 | ----- | Church                 | +    |
| Original lot line           | ----- | Cemetery               | Δ    |
|                             |       | Golf Course            | δ    |
|                             |       | School                 | ⊞    |

**REVISIONS**

|   |  |
|---|--|
| 1 |  |
| 2 |  |
| 3 |  |
| 4 |  |
| 5 |  |
| 6 |  |
| 7 |  |
| 8 |  |

**RESTRICTION**

All tax maps created under the provisions of reappraisal legislation are the property of Harrison County West Virginia and the reproduction, copying distribution or sale of such tax maps or any copies thereof without the written permission of the Harrison County Assessor is prohibited by law.

**KEY MAP**

|     |     |     |
|-----|-----|-----|
| 206 | 207 | 208 |
| 226 | 227 | 228 |
| 246 | 247 | 248 |

**HARRISON COUNTY**  
**STATE OF WEST VIRGINIA**  
**Office of Assessor**

DISTRICT  
EAGLE  
MAP NO:  
227

Date, Aerial Photography: April 1960 Date, Map: Sept. 1960  
Photo No: Scale: 1" = 400'