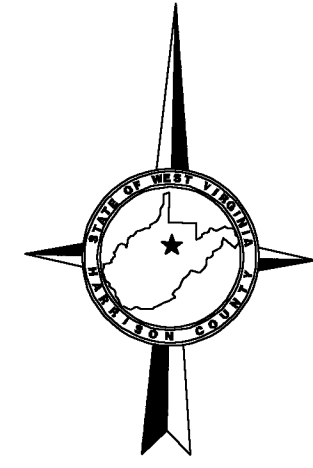
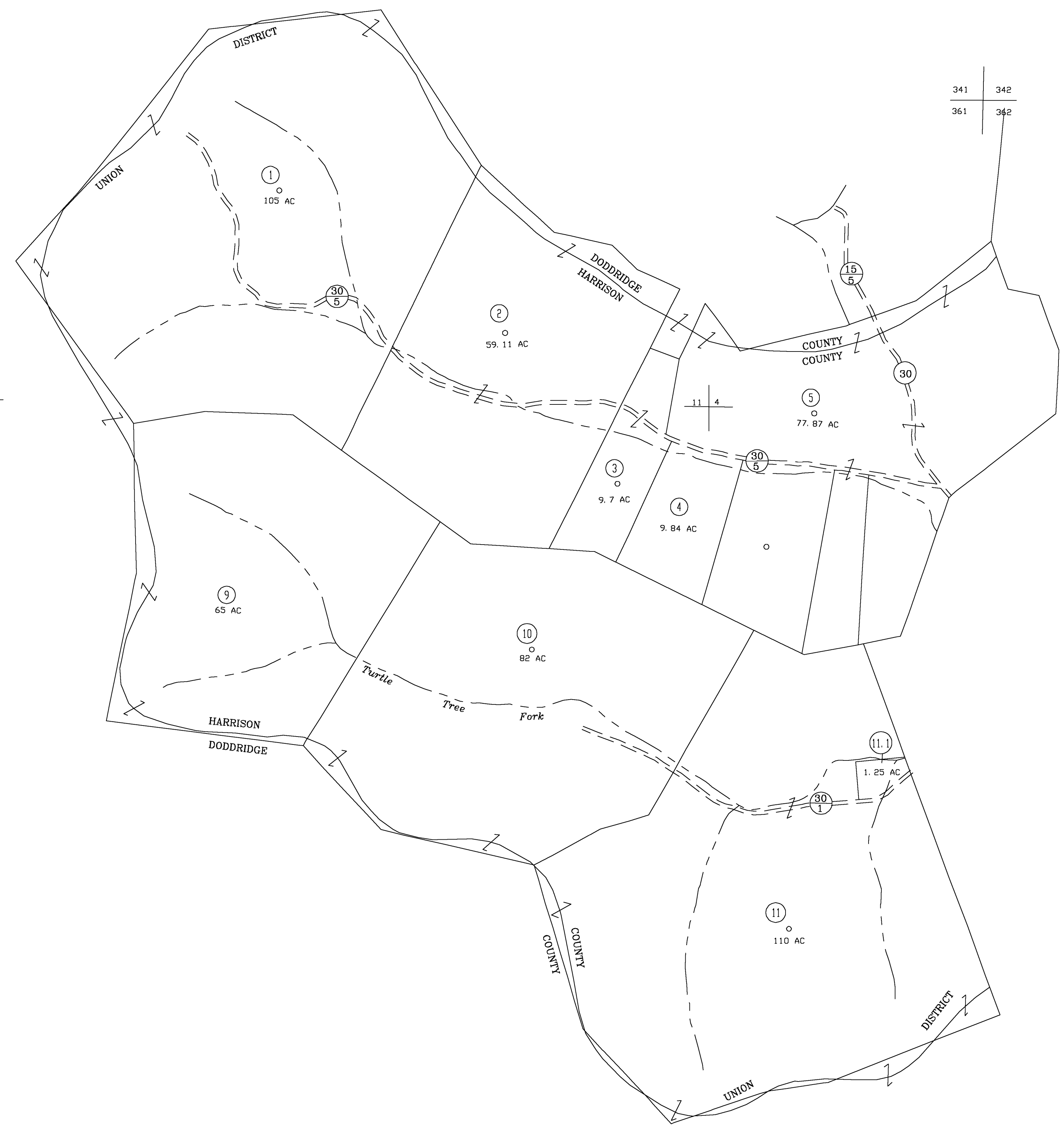


341  
361



341 342  
361 362

11 3



361  
381

361 362  
381 382

For Tax Purposes Only

**CHERYL L. ROMANO**  
**HARRISON COUNTY ASSESSOR**

**LEGEND**

Property line	—————	Deed lot number	(15)
Edge of pavement or roadway	———	Parcel or Index number	XX
Corporation line	—————	Improvement	o
District line	—————	Railroad	—+—
County line	—————	Church	+
Original lot line	-----	Cemetery	Δ
		Golf Course	δ
		School	⬢

**REVISIONS**

1	
2	
3	
4	
5	
6	
7	
8	

**RESTRICTION**

All tax maps created under the provisions of reappraisal legislation are the property of Harrison County West Virginia and the reproduction, copying distribution or sale of such tax maps or any copies thereof without the written permission of the Harrison County Assessor is prohibited by law.

**KEY MAP**

341	342
361	362
381	382

**HARRISON COUNTY**  
**STATE OF WEST VIRGINIA**  
**Office of Assessor**

DISTRICT  
UNION  
MAP NO:  
361

Date, Aerial Photography: April 1960 Date, Map: Sept. 1960  
Photo No: Scale: 1" = 400'